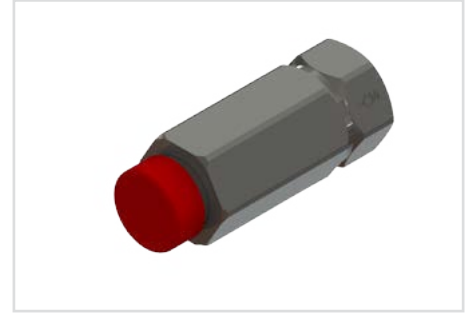


Features

- Suitable for direct in-line installation,
- Body material steel DIN 1.0715,
- Body surface nickel coated,
- Fluid viscosity 10 - 500 mm²/s (10-420 cSt),
- For mineral oil ISO 6743/4,
- Leakage 0 – 0,25 cm³/min

Özellikleri

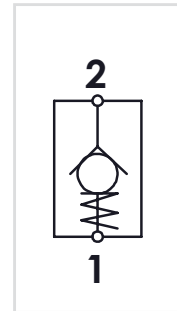
- Direkt hat üzerine montaja uygun,
- Gövde malzemesi çelik DIN 1.0715,
- Gövde yüzeyi nikel kaplama,
- Akışkan viskozitesi 10 - 500 mm²/s (10-420 cSt),
- ISO 6743/4 Mineral yağlar için,
- İç kaçak 0 – 0,25 cm³/min



Order Code - Sipariş Kodu

| GCE | - | 06 | - | 1 | - | B |
|-------------|-------------|----------------------------|-----------------------|---|---|---|
| Model - Tip | Size - Ebat | Spring Force - Yay Kuvveti | TheradType - Diş Tipi | | | |
| GCE | 06 = 1/4" | 1 = 1 Bar * | B = BSPP | | | |
| | 08 = 3/8" | 2 = 3 Bar | N = NPT | | | |
| | 10 = 1/2" | 3 = 6 Bar | U = UNF | | | |
| | 15 = 3/4" | | | | | |
| | 20 = 1" | | | | | |
| | 25 = 1 1/4" | | | | | |
| | 30 = 1 1/2" | | | | | |

Circuit - Şema



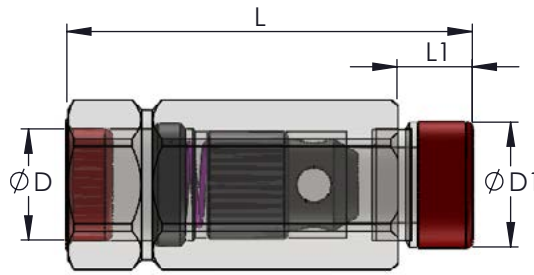
Sectional - Kesit



- * Standard spring force 1 Bar,
- * Standart yay kuvveti 1 Bar,

General Parameters and Dimensions (mm) – Genel parametreler ve ölçüler (mm)

| Size - Ölçü | Q max | P max | ØD | ØD1 | AA | L | L1 | Weight Ağırlık |
|-------------|-------|-------|--------|--------|----|------|----|----------------|
| | l/min | Bar | BSPP | BSPP | | | | Kg |
| GCE-06 | 15 | 400 | 1/4" | 1/4" | 19 | 55 | 11 | 0,10 |
| GCE-08 | 30 | 400 | 3/8" | 3/8" | 24 | 65 | 12 | 0,18 |
| GCE-10 | 50 | 400 | 1/2" | 1/2" | 27 | 75 | 14 | 0,23 |
| GCE-15 | 90 | 400 | 3/4" | 3/4" | 36 | 86,5 | 16 | 0,45 |
| GCE-20 | 150 | 350 | 1" | 1" | 41 | 110 | 19 | 0,73 |
| GCE-25 | 200 | 350 | 1 1/4" | 1 1/4" | 55 | 123 | 22 | 1,5 |
| GCE-30 | 300 | 300 | 1 1/2" | 1 1/2" | 60 | 138 | 22 | 2 |



Pressure Drop – Basınç Kaybı

