

Features

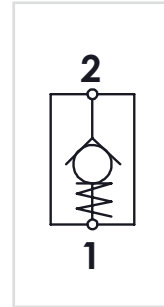
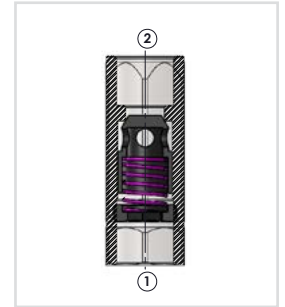
- Suitable for direct in-line installation,
- Body material steel DIN 1.0715,
- Body surface nickel coated,
- Flued viscosity 10 - 500 mm²/s (10-420 cSt),
- For mineral oil ISO 6743/4,
- Leakage 0 – 0,25 cm³/min

Özellikleri

- Direkt hat üzerine montaja uygun,
- Gövde malzemesi çelik DIN 1.0715,
- Gövde yüzeyi nikel kaplama,
- Akışkan viskozitesi 10 - 500 mm²/s (10-420 cSt),
- ISO 6743/4 Mineral yağlar için,
- İç kaçak 0 – 0,25 cm³/min


Order Code - Sipariş Kodu

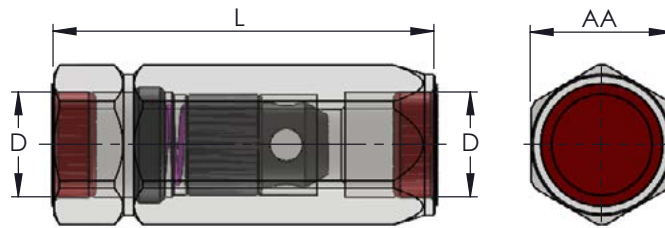
GCV	- 06	- 1	B
Model - Tip	Size - Ebat	Spring Force - Yay Kuvveti	TheradType - Diş Tipi
GCV	06 = 1/4"	1 = 1 Bar *	B = BSPP
	08 = 3/8"	2 = 3 Bar	N = NPT
	10 = 1/2"	3 = 6 Bar	U = UNF
	15 = 3/4"		
	20 = 1"		
	25 = 1 1/4"		
	30 = 1 1/2"		

Circuit - Şema

Sectional - Kesit


- * Standart spring force 1 Bar,
- * Standart yay kuvveti 1 Bar,

General Parameters and Dimensions (mm) – Genel parametreler ve ölçüler (mm)

Size - Ölçü	Q max	P max	ØD	AA	L	Weight Kg
	l/min	Bar	BSPP			Ağırlık
GCV-06	15	400	1/4"	19	55	0,10
GCV-08	30	400	3/8"	24	65	0,18
GCV-10	50	400	1/2"	27	75	0,23
GCV-15	90	400	3/4"	36	86,5	0,45
GCV-20	150	350	1"	41	110	0,73
GCV-25	200	350	1 1/4"	55	123	1,5
GCV-30	300	300	1 1/2"	60	138	2



Pressure Drop – Basınç Kaybı

