

Features

- Suitable for direct in-line installation,
- Body material steel DIN 1.7225,
- Body surface nickel coated,
- Flued viscosity 10 - 500 mm²/s (10-420 cSt),
- For mineral oil ISO 6743/4,

Özellikleri

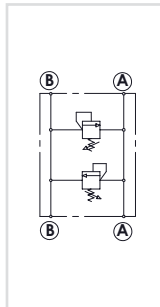
- Direkt hat üzerine montaja uygun,
- Gövde malzemesi çelik DIN 1.7225,
- Gövde yüzeyi nikel kaplama,
- Akışkan viskozitesi 10 - 500 mm²/s (10-420 cSt),
- ISO 6743/4 Mineral yağlar için,



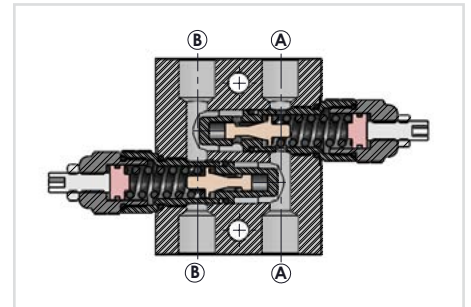
Order Code - Sipariş Kodu

GDEV	-	08	-	B
Model - Tip		Size		FemaleThread
GDEV = Body		08 = 3/8"		B = BSPP
		10 = 1/2"		N = NPT
				U = UNF

Circuit - Şema



Sectional - Kesit



General Parameters and Dimensions (mm) – Genel parametreler ve ölçüler (mm)

Size - Ölçü	Q max l/min	P max Bar	ØD BSPP	ValveType Valf tipi	L	L1 - max	Weight Ağırlık
							Kg
GDEV-4020-08	40	350	3/8"	EV 40	80	44	1,55
GDEV-8020-10	80	350	1/2"	EV 80	96	60	1,85

Pressure Drop – Basınç Kaybı

