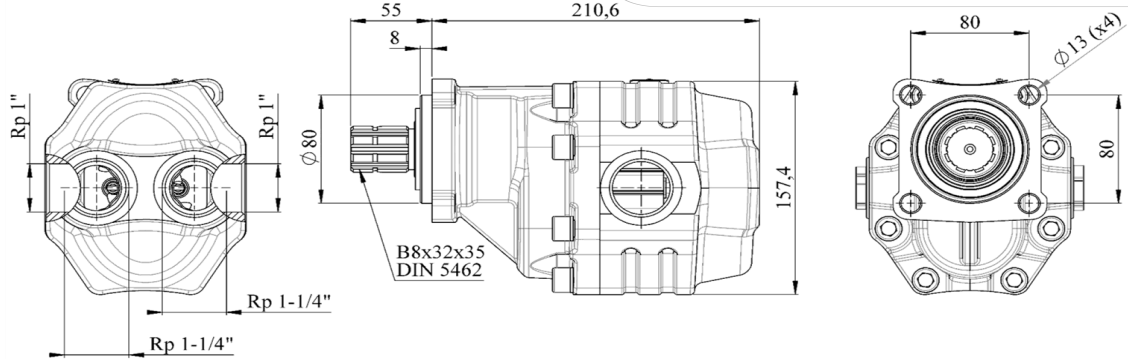




TECHNICAL DATA

TEKNİK VERİLER

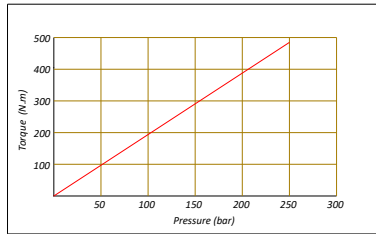
63 cc ISO Bi-Directional Gear Pump



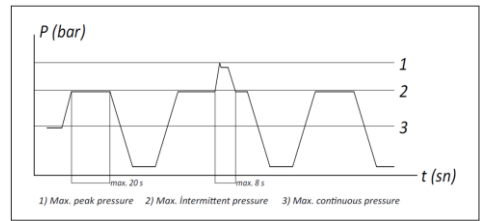
Specifications

Code	Displacement	Rotation	Working Pressure	Max.intermittent pressure	Max.peak pressure	Max. continuous speed	Max.speed at intermit. pressure	Oil temperature range	Operating Viscosity Range	Oil inlet diameter	Oil Outlet diameter	Weight
33506351	63 cc/rev.	bi-rotational	290 bar	315 bar	325 bar	1800 1/min.	2700 1/min.	-20 & 80 °C	12 & 100 cS	G 1 1/4"	G 1"	15,5 kg

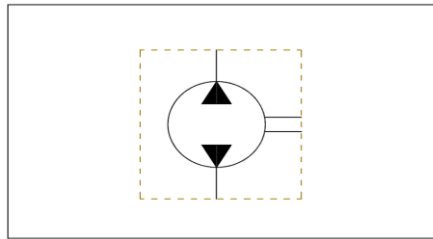
Torgue - Pressure charesteristics



Pressure definition



Hydraulic Pump Symbol

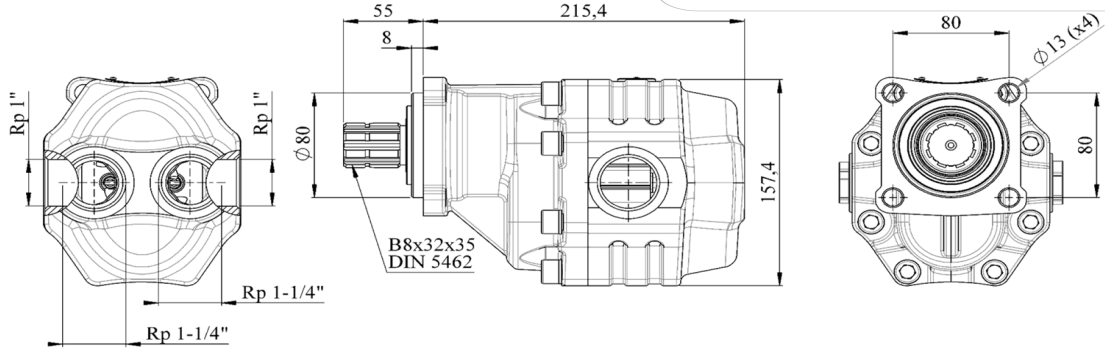


35 SERIES GEAR PUMPS
35 SERİSİ DİŞLİ POMPA

HYDRAULIC PUMPS
HİDROLİK POMPALAR



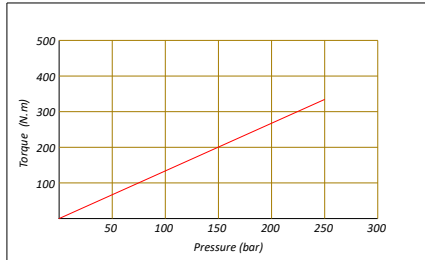
75 cc ISO Bi-Directional Gear Pump



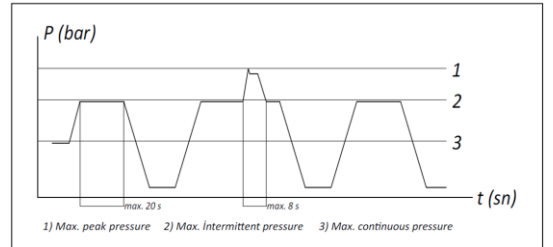
Specifications

Product Code	Displacement	Rotation	Working Pressure	Max.intermittent pressure	Max.peak pressure	Max.continuous speed	Max.speed at intermit. pressure	Oil temperature range	Operating Viscosity Range	Oil inlet diameter	Oil Outlet diameter	Weight
33507551	75 cc/rev.	bi-rotational	280 bar	300 bar	315 bar	1800 1/min.	2700 1/min.	-20 & 80 °C	12 & 100 cSt	G 1 1/4"	G 1"	17,5 kg

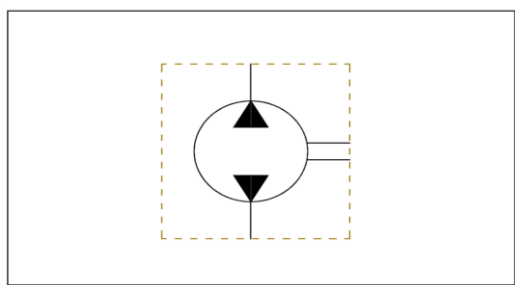
Torgue - Pressure charesteristics



Pressure definition

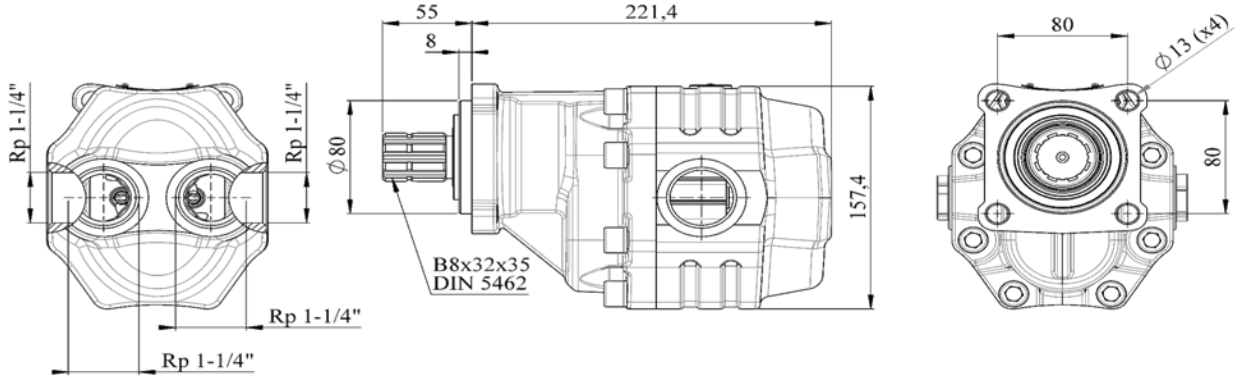


Hydraulic Pump Symbol





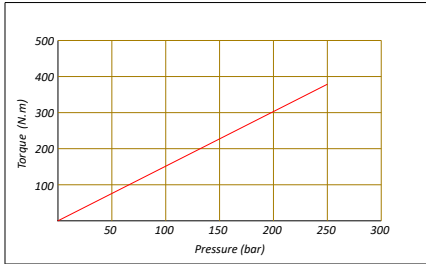
90 cc ISO Bi-Directional Gear Pump



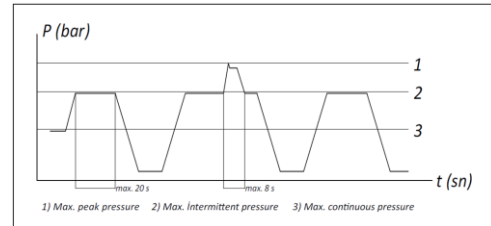
Specifications

Product Code	Displacement	Rotation	Working Pressure	Max.intermittent pressure	Max.peak pressure	Max.continuous speed	Max.speed at intermit. pressure	Oil temperature	Operating Viscosity Range	Oil inlet diameter	Oil Outlet diameter	Weight
33509051	90 cc/rev.	bi-rotational	260 bar	280 bar	290 bar	1800 1/min.	2700 1/min.	-20 & 80 °C	12 & 100 cSt	G 1 1/4"	G 1 1/4"	18,5 kg

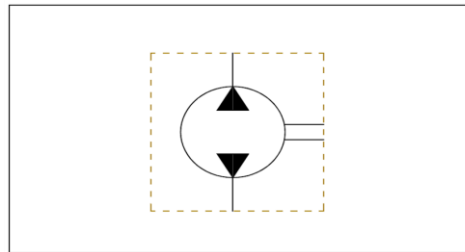
Torgue - Pressure charesteristics



Pressure definition



Hydraulic Pump Symbol

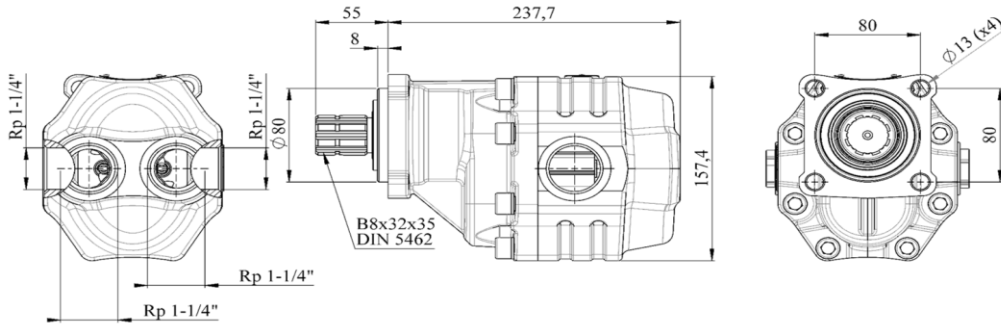




TECHNICAL DATA

TEKNİK VERİLER

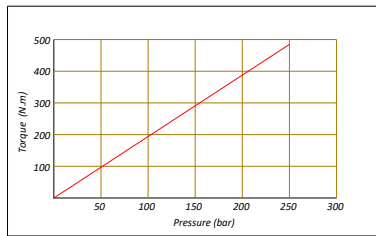
100 cc ISO Bi-Directional Gear Pump



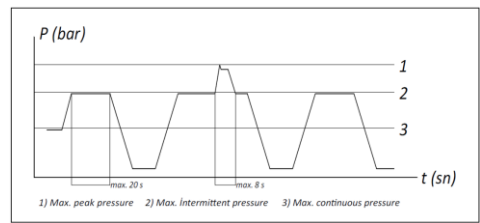
Specifications

Code	Displacement	Rotation	Working Pressure	Max.intermittent pressure	Max.peak pressure	Max.continuous speed	Max.speed at intermit. pressure	Oil temperature range	Operating Viscosity Range	Oil inlet diameter	Oil Outlet diameter	Weight
33510051	100 cc/rev.	bi-rotational	250 bar	270 bar	280 bar	1800 1/min.	2700 1/min.	-20 & 80 °C	12 & 100 cS	G 1 1/4"	G 1 1/4"	19,5 kg

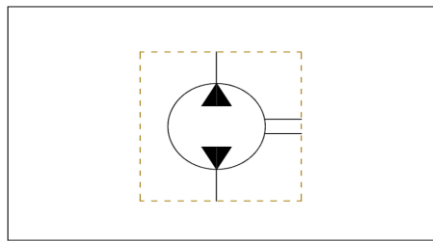
Torgue - Pressure charesteristics



Pressure definition



Hydraulic Pump Symbol

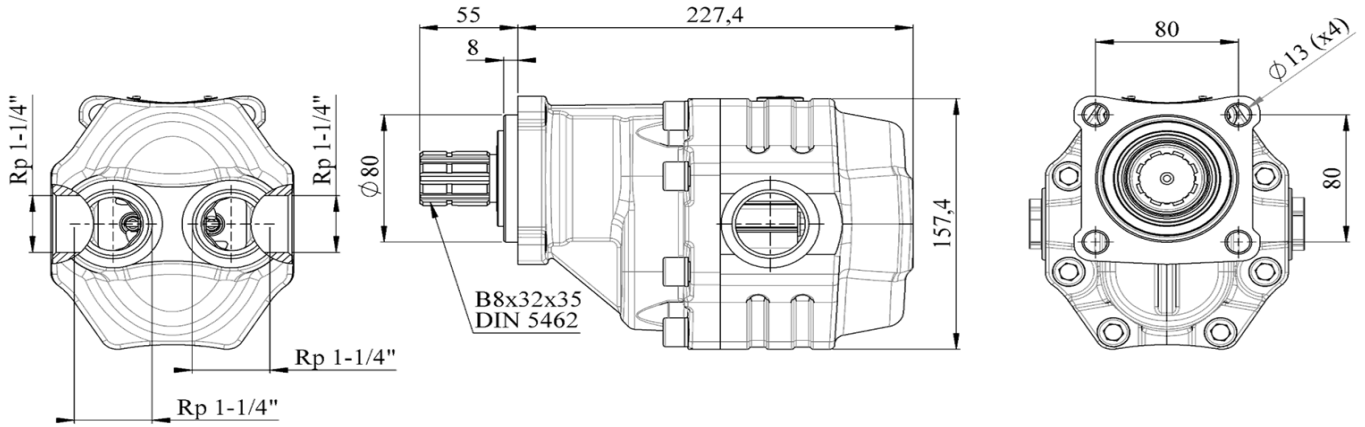


35 SERIES GEAR PUMPS
35 SERİSİ DİŞLİ POMPA

HYDRAULIC PUMPS
HİDROLİK POMPALAR



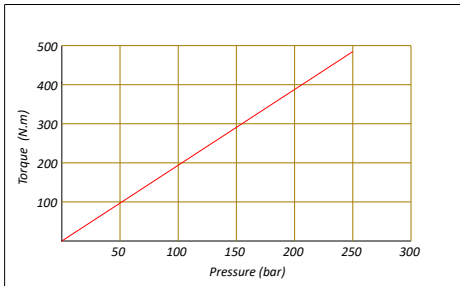
110 cc ISO Bi-Directional Gear Pump



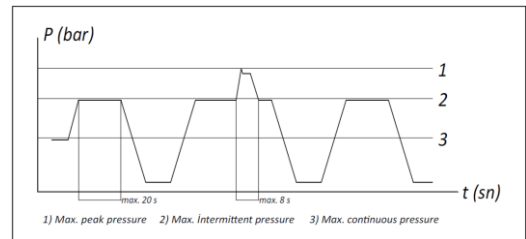
Specifications

Product Code	Displacement	Rotation	Working Pressure	Max.intermittent pressure	Max.peak pressure	Max.continuous speed	Max.speed at intermit. pressure	Oil temperature range	Operating Viscosity Range	Oil inlet diameter	Oil Outlet diameter	Weight
33511051	110 cc/rev.	bi-rotational	240 bar	260 bar	270 bar	1500 1/min.	2500 1/min.	-20 & 80 °C	2 & 100 cS	G 1 1/4"	G 1 1/4"	19,5 kg

Torgue - Pressure charesteristics



Pressure definition



Hydraulic Pump Symbol

