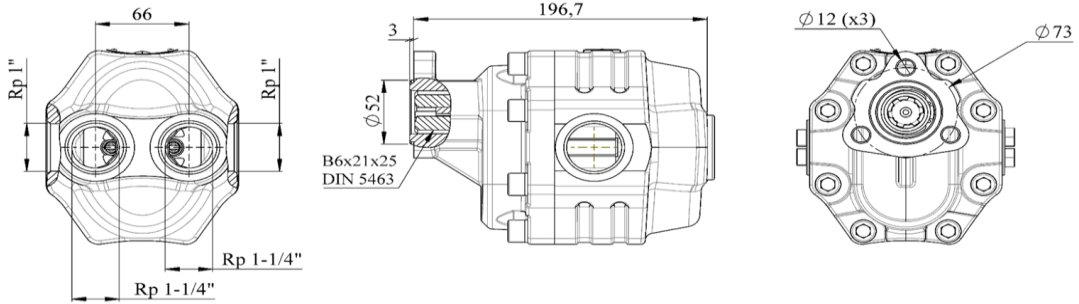




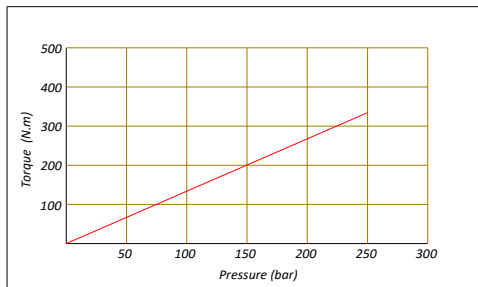
63 cc UNI Bi-Directional Gear Pump



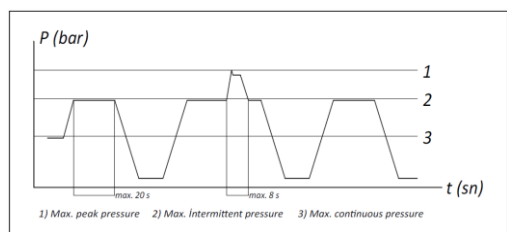
Specifications

Product Code	Displacement	Rotation	Working Pressure	Max.intermittent pressure	Max.peak pressure	Max.continuous speed	Max.speed at intermit. pressure	Oil temperature range	Operating Viscosity Range	Oil inlet diameter	Oil Outlet diameter	Weight
35506341	63 cc/rev.	bi-rotational	290 bar	315 bar	325 bar	1500 1/min.	2500 1/min.	-20 & 80 °C	12 & 100 cSt	G 1 1/4"	G 1"	14,5 kg

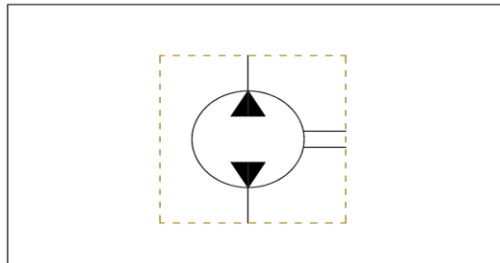
Torque - Pressure charesteristics



Pressure definition

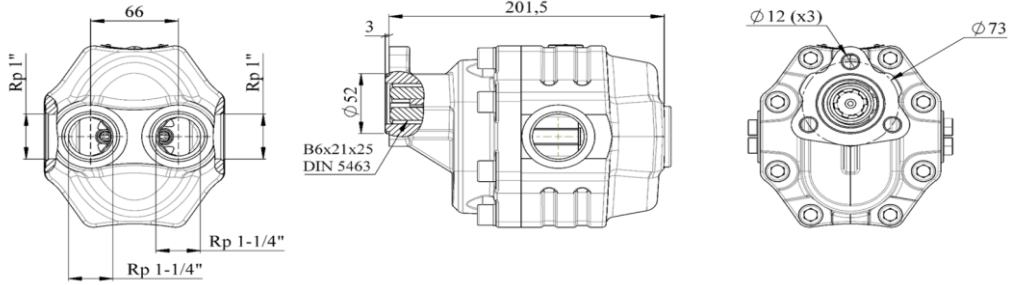


Hydraulic Pump Symbol





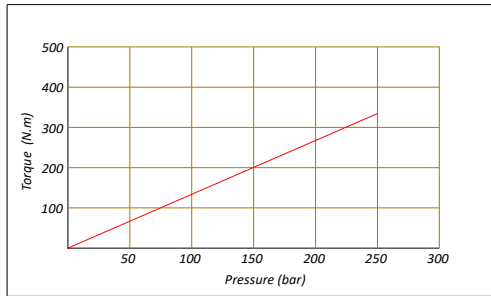
75 cc UNI Bi-Directional Gear Pump



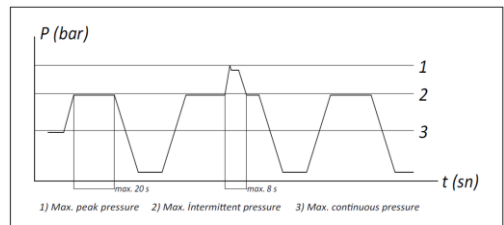
Specifications

Product Code	Displacement	Rotation	Working Pressure	Max.intermittent pressure	Max.peak pressure	Max.continuous speed	Max.speed at intermit. pressure	Oil temperature range	Operating Viscosity Range	Oil inlet diameter	Oil Outlet diameter	Weight
35507541	75 cc/rev.	bi-rotational	280 bar	300 bar	315 bar	1800 1/min.	2700 1/min.	-20 & 80 °C	12 & 100 cSt	G 1 1/4"	G 1"	15,5 kg

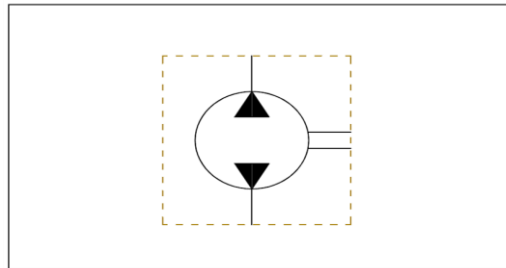
Torgue - Pressure charesteristics



Pressure definition

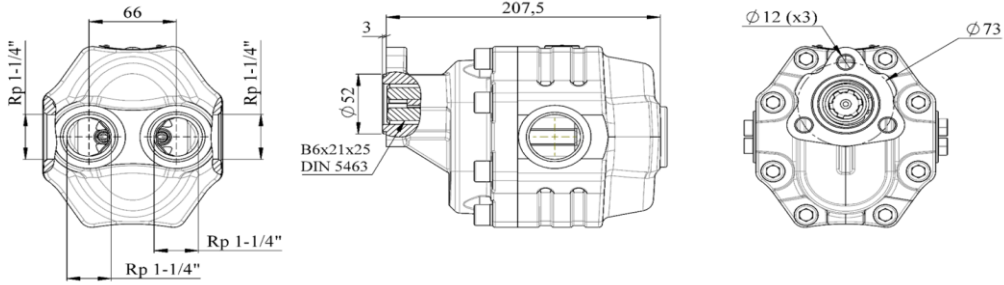


Hydraulic Pump Symbol





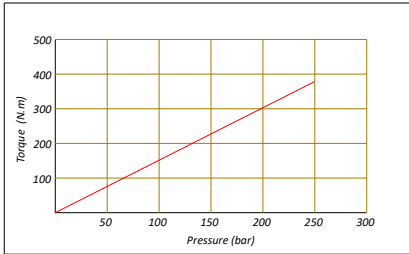
90 cc UNI Bi-Directional Gear Pump



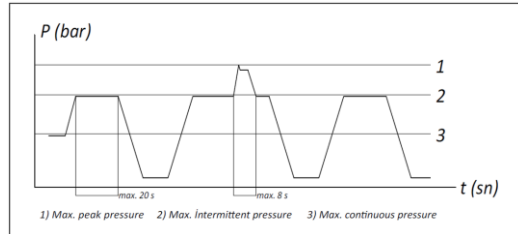
Specifications

Product Code	Displacement	Rotation	Working Pressure	Max.intermittent pressure	Max.peak pressure	Max.continuous speed	Max.speed at intermit. pressure	Oil temperature range	Operating Viscosity Range	Oil inlet diameter	Oil Outlet diameter	Weight
35509041	90 cc/rev.	bi-rotational	260 bar	280 bar	290 bar	1800 1/min.	2700 1/min.	-20 & 80 °C	12 & 100 cSt	G 1 1/4"	G 1 1/4"	16,5 kg

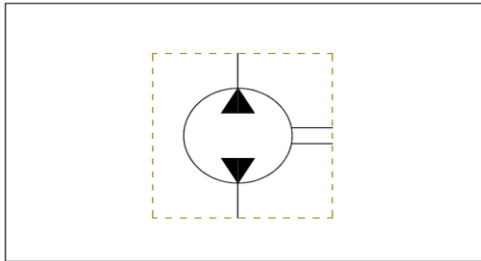
Torgue - Pressure charesteristics



Pressure definition

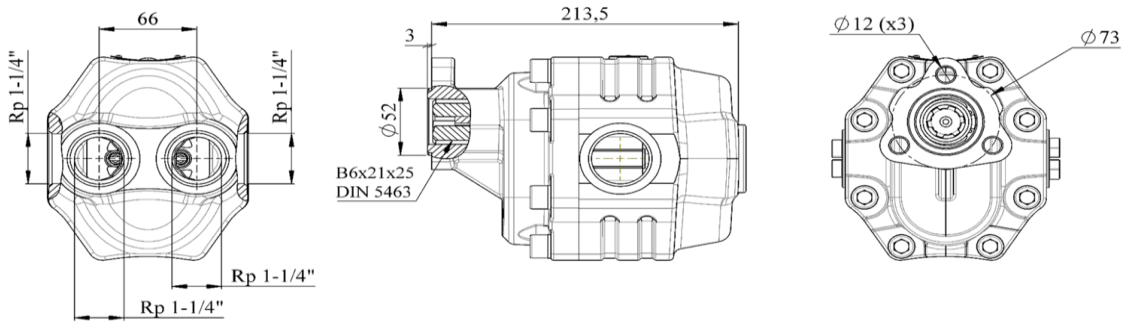


Hydraulic Pump Symbol





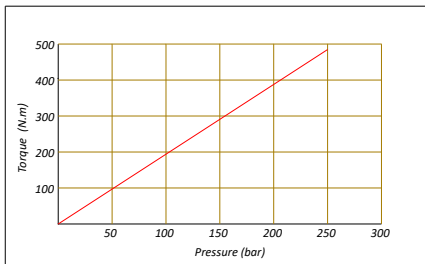
110 cc UNI Bi-Directional Gear Pump



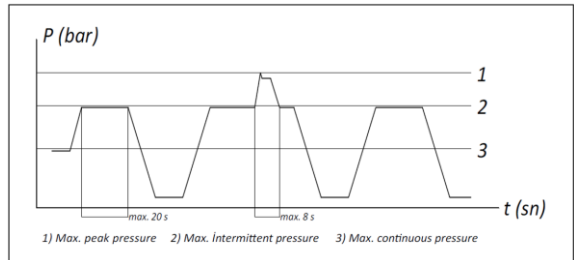
Specifications

Product Code	Displacement	Rotation	Working Pressure	Max. intermittent	Max. peak pressure	Max. continuous speed	Max. speed at intermit. pressure	Oil temperature range	Operating Viscosity Range	Oil inlet diameter	Oil Outlet diameter	Weight
35511041	110 cc/rev.	bi-rotational	240 bar	260 bar	270 bar	1500 1/min.	2500 1/min.	-20 & 80 °C	12 & 100 cSt	G 1 1/4"	G 1 1/4"	17,5 kg

Torgue - Pressure charesteristics



Pressure definition



Hydraulic Pump Symbol

