

Features

- Suitable for direct in-line installation,
- Body material steel DIN 1.7225,
- Body surface nickel coated,
- Flued viscosity 10 - 500 mm²/s (10-420 cSt),
- For mineral oil ISO 6743/4,
- Leakage 0 – 0,25 cm³/min

Özellikleri

- Direkt hat üzerine montaja uygun,
- Gövde malzemesi çelik DIN 1.7225,
- Gövde yüzeyi nikel kaplama,
- Akışkan viskozitesi 10 - 500 mm²/s (10-420 cSt),
- ISO 6743/4 Mineral yağlar için,
- İç kaçak 0 – 0,25 cm³/min

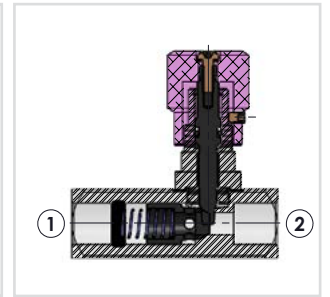
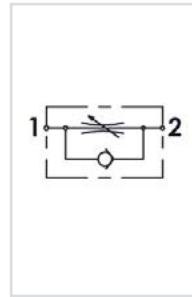


Order Code - Sipariş Kodu

Circuit - Şema

Sectional - Kesit

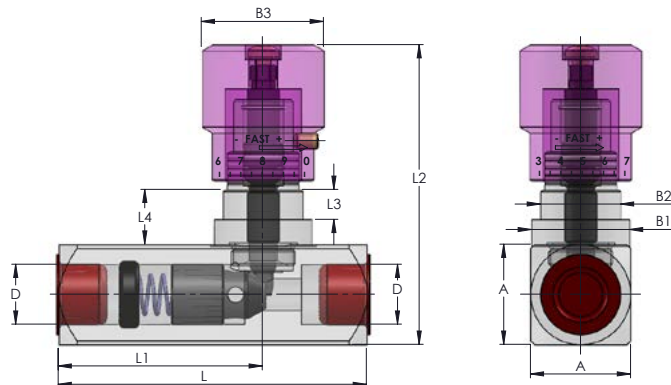
GKCV - 06 - 1 - B			
Model - Tip	Size - Ebat	Spring Force Yay Kuvveti	Thread Type Diş Tipi
GKCV	06 = 1/4"	1 = 1 Bar *	B = BSPP
	08 = 3/8"	2 = 3 Bar	N = NPT
	10 = 1/2"		
	15 = 3/4"		
	20 = 1"		
	25 = 1 1/4"		
	30 = 1 1/2"		



- * Standart spring force 1 Bar,
- * Standart yay kuvveti 1 Bar,

General Parameters and Dimensions (mm) – Genel parametreler ve ölçüler (mm)

Size - Ölçü	Q max	P max	ØD	A	B1	B2	B3	L	L1	L2	L3	L4	Weight Ağırlık
	l/min	Bar	BSPP										Kg
GKCV-06	15	400	1/4"	25	24,5	M20x1,5	30	66	40	75	7,5	13,5	0,40
GKCV-08	30	400	3/8"	25	24,5	M20x1,5	30	77	51	75	7,5	13,5	0,43
GKCV-10	50	300	1/2"	30	29,5	M25x1,5	30	91	59	80	9,5	13,5	0,67
GKCV-15	80	300	3/4"	40	39,5	M35x1,5	41	112,5	72	109	15	23	1,30
GKCV-20	150	300	1"	45	39,5	M35x1,5	41	141	90	114	15	23	2,05
GKCV-25	200	250	1 1/4"	55	49	M45x1,5	51	155	104	136	12	23	3,32
GKCV-30	300	200	1 1/2"	65	49	M45x1,5	51	168	117	146	12	23	4,70



Pressure Drop – Basınç Kaybı

