

GM-MCB SERIE

GEMMA HYDRAULIC OIL COOLER

1. 230/400 VOLT ENGINE OIL COOLERS

GM-MCB Serie is our product line used in all industrial systems. The hydraulic cooling products we offer are manufactured with high quality standards. From material supply to production and post-production quality control processes, every stage is under strict control and surveillance.

GM-MCB Serie is used in;

- Mobile systems,
- Fixed unit applications,

Our products are complete cooling systems for AC-DC applications. Complete coolers for AC 230-400 volt applications for.



HYDRAULIC OIL COOLER GM-MCB SERIE

**PROPERTIES**

- Test Pressure: 30bar.
- Operating Pressure: 25 bar.
- Used for cooling Synthetic, Mineral Oils, and some liquids.
- Heat in the fluid is cooled through the help of a fan.
- Bar-Plate type cooling pad is used.
- Flexible 6063 aluminum material is used.
- Designed for all kinds of working conditions.
- Ready to use and easy to maintain.
- Has high efficiency and low cost.

2. CAPACITY PROPERTIES



Product Model	Max. Flowrate (L/min)	Capacity (Kcal/h)
GM-MCB1	20	1000
GM-MCB2	50	2500
GM-MCB3	75	5000
GM-MCB4	75	5000
GM-MCB5	100	6000
GM-MCB6	120	12000
GM-MCB7	150	22500
GM-MCB8	200	50000
GM-MCB9	250	55000
GM-MCB10	300	60000
GM-MCB11	400	70000

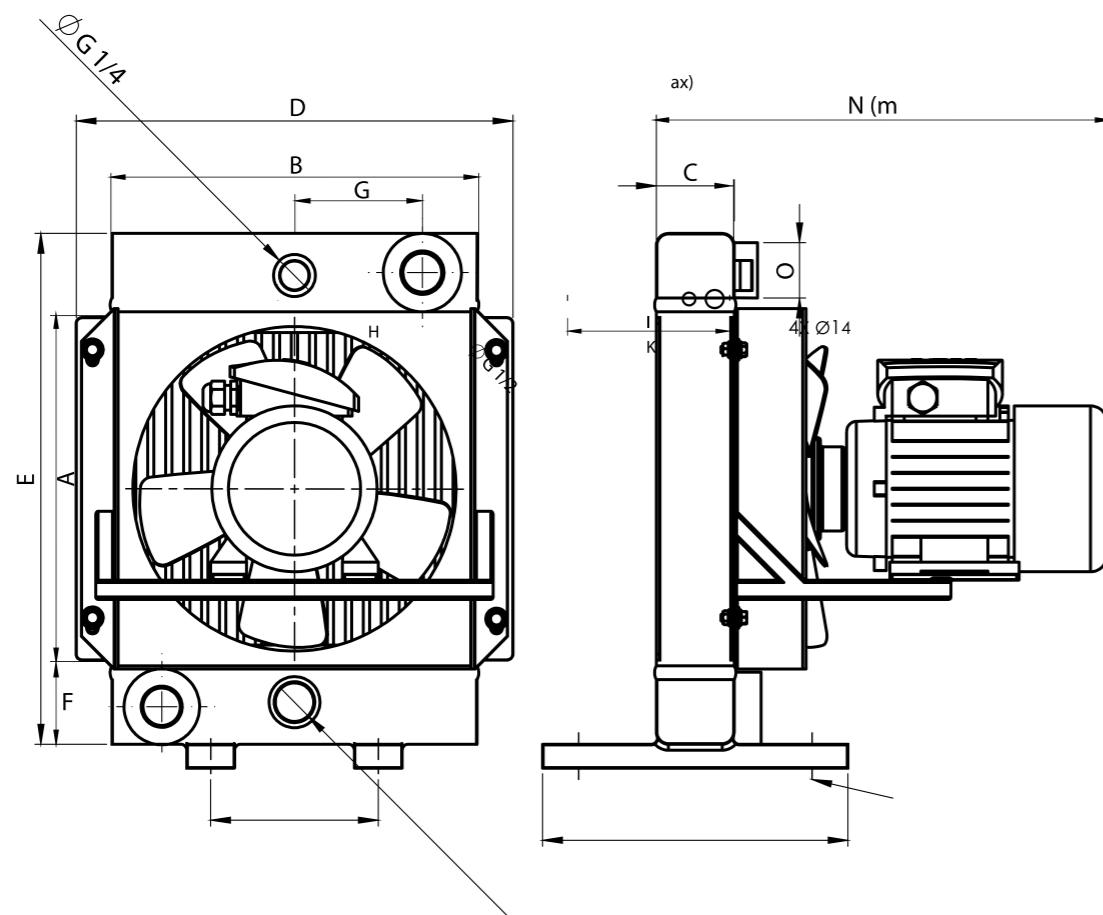
3. TECHNICAL DATA

Model Data	Fan Diameter	Fan Speed	dB(A) 1m	Voltage(V)	kW	Operating Pressure (Bar)
GM-MCB1	-	-	-	-	-	-
GM-MCB2	250	1500	-	230-400	0.18	25
GM-MCB3	380	1000	68	230-400	0.25	25
GM-MCB4	380	1000	68	230-400	0.25	25
GM-MCB5	450	1500	77	230-400	0.37	25
GM-MCB6	500	1000	68	230-400	0.37	25
GM-MCB7	500	1000	68	230-400	0.37	25
GM-MCB8	630	1500	90	230-400	2.2	25
GM-MCB9	900	750	82	230-400	1.5	15
GM-MCB10	900	1000	88	230-400	3.0	15
GM-MCB11	1000	1000	90	400	7.5	15

4. DIMENSIONS

Dimensions	GM-MCB1	GM-MCB2	GM-MCB3	GM-MCB4	GM-MCB5	GM-MCB6	GM-MCB7	GM-MCB8	GM-MCB9	GM-MCB10	GM-MCB11
A	200	300	400	400	550	650	790	800	1025	1025	1170
B	195	305	395	395	410	560	560	650	010	910	1200
C	63	63	63	94	94 (63)	94	94	140	94	113	140
D	254	360	452	452	467	612	613	723	992	992	1270
E	315	415	515	535	690	790	940	960	1350	1350	1520
F	45	45	45	63	63	63	70	70	75	75	70
G	65	115	160	160	165	235	235	280	390	390	532
H	80	150	200	200	200	310	310	400	440	440	525
I	140	190	190	240	240	240	240	240	215	215	200
K	200	250	150	300	300	300	300	300	580	580	750
L	-	-	-	-	-	-	-	-	-	-	-
M	-	-	-	-	-	-	-	-	-	-	-
N (max)	175	370	400	430	440	450	450	590 app	650 app	790 app	900 app
O	1" BSP	1" BSP	1" BSP	1" BSP	1" BSP	1" BSP	1" BSP	1" BSP	-	-	-

5. DIMENSIONS OF THE COOLERS BETWEEN GM-MCB1 AND GM-MCB7



6. DIMENSIONS OF THE COOLERS BETWEEN GM-MCB8 AND GM-MCB11

