

GM-MCH SERIE

GEMMA HYDRAULIC OIL COOLER

1. HYDROMOTOR DRIVEN OIL COOLERS

GM-MCH Serie is our product line used in all industrial systems. The hydraulic cooling products we offer are manufactured with high quality standards. From material supply to production and post-production quality control processes, every stage is under strict control and surveillance.

GM-MCH Serie is used in;

- Mobile systems,
- Fixed unit applications,

Our products are complete cooling systems for AC-DC applications.

**HYDRAULIC OIL COOLER
GM-MCH SERIE****PROPERTIES**

- Test Pressure: 30bar.
- Operating Pressure: 25 bar.
- Used for cooling Synthetic, Mineral Oils, and some liquids.
- Heat in the fluid is cooled through the help of a fan.
- Bar-Plate type cooling pad is used.
- Flexible 6063 aluminum material is used.
- Designed for all kinds of working conditions.
- Ready to use and easy to maintain.
- Has high efficiency and low cost.

2. CAPACITY PROPERTIES



Product Model	Max. Flowrate (Lt./min)	Capacity (Kcal/h)
GM-MCH1	20	1000
GM-MCH2	50	2500
GM-MCH3	75	5000
GM-MCH4	75	5000
GM-MCH5	100	6000
GM-MCH6	120	12000
GM-MCH7	150	22500
GM-MCH8	200	50000
GM-MCH9	250	55000
GM-MCH10	300	60000
GM-MCH11	400	70000

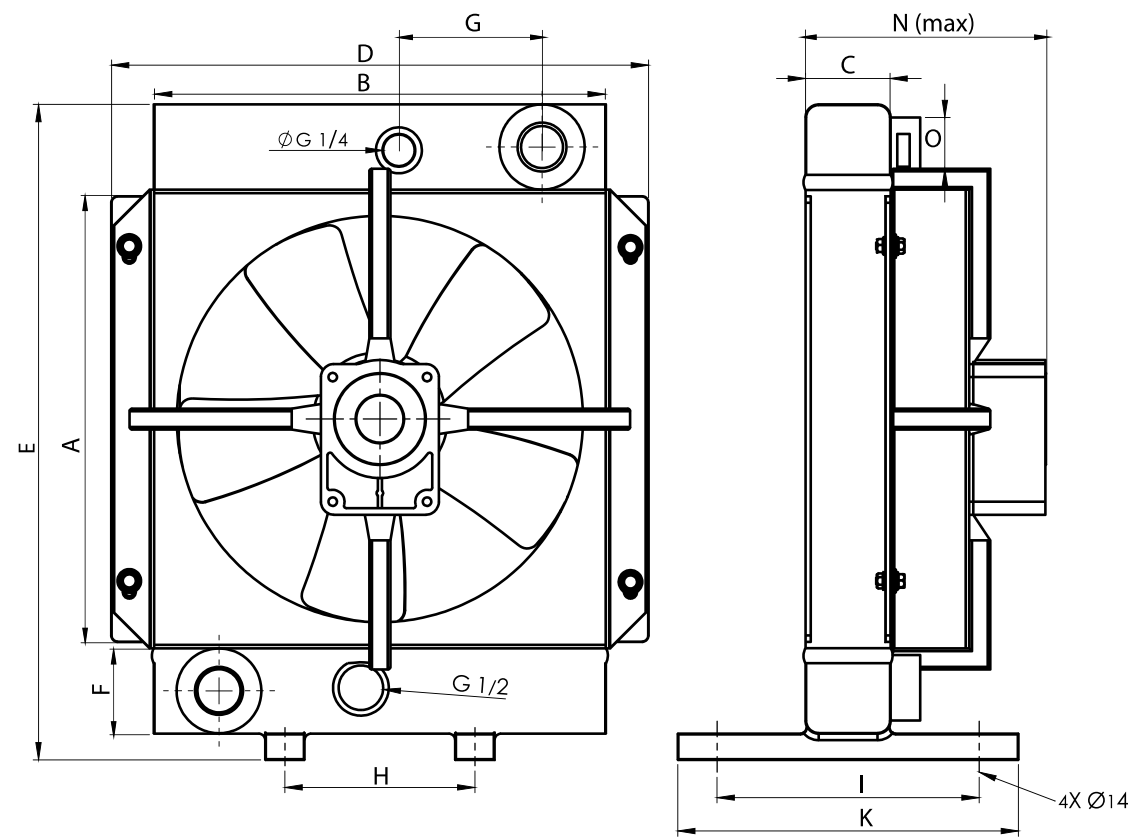
3. TECHNICAL DATA

Model Data	Fan Diameter	Fan Speed	dB(A) 1m	Voltage(V)	kW	Operating Pressure (Bar)
GM-MCH1	-	-	-	-	-	-
GM-MCH2	250	1500	57	Hydraulic	-	25
GM-MCH3	380	1500	75	Hydraulic	-	25
GM-MCH4	380	1500	77	Hydraulic	-	25
GM-MCH5	450	1500	77	Hydraulic	-	25
GM-MCH6	500	1500	79	Hydraulic	-	25
GM-MCH7	500	1500	79	Hydraulic	-	25
GM-MCH8	630	1000	79	Hydraulic	-	25
GM-MCH9	900	1000	88	Hydraulic	-	15
GM-MCH10	900	1500	98	Hydraulic	-	15
GM-MCH11	1000	1500	100	Hydraulic	-	15

4. DIMENSIONS

Dimensions	GM-MCH1	GM-MCH2	GM-MCH3	GM-MCH4	GM-MCH5	GM-MCH6	GM-MCH7	GM-MCH8	GM-MCH9	GM-MCH10	GM-MCH11
A	200	300	400	400	550	650	790	800	1025	1025	1170
B	195	305	395	395	410	560	560	650	010	910	1200
C	63	63	63	94	94 (63)	94	94	140	94	113	140
D	254	360	452	452	467	612	613	723	992	992	1270
E	315	415	515	535	690	790	940	960	1350	1350	1520
F	45	45	45	63	63	63	70	70	75	75	70
G	65	115	160	160	165	235	235	280	390	390	532
H	80	150	200	200	200	310	310	400	440	440	525
I	140	190	190	240	240	240	240	240	215	215	200
K	200	250	250	300	300	300	300	300	580	580	750
L	-	-	-	-	-	-	-	-	-	-	-
M	-	-	-	-	-	-	-	-	-	-	-
N (max)	175	370	400	430	440	450	450	590 app	650 app	790 app	900 app
O	1"BSP	1"BSP	1"BSP	1"BSP	1 1/4"BSP (1"BSP)	1 1/4"BSP	1 1/4"BSP	1 1/2"BSP	-	-	-

5. DIMENSIONS OF THE COOLERS BETWEEN GM-MCH1 AND GM-MCH7



6. DIMENSIONS OF THE COOLERS BETWEEN GM-MCH8 AND GM-MCH11

