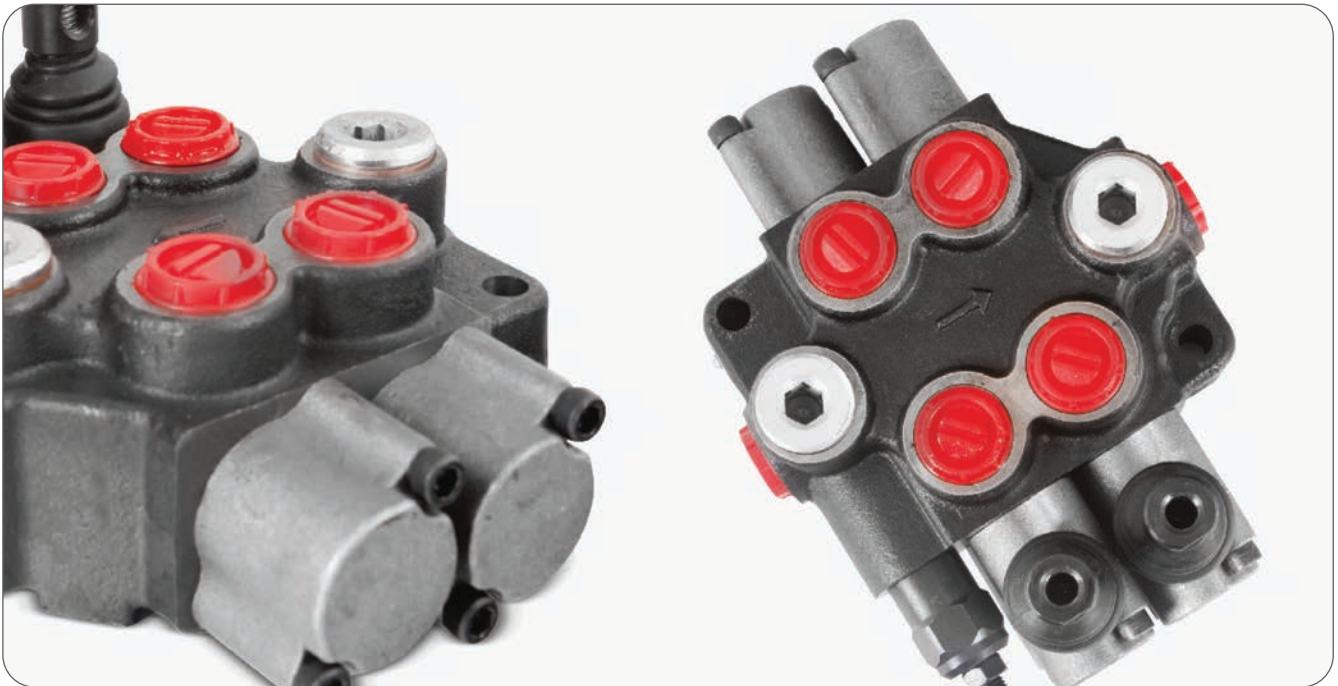




MONOBLOCK
DIRECTIONAL
CONTROL VALVES
GMM-M45

CE





CONTENTS

Working Conditions	21
Dimensional Data	22
Hydraulic Circuit	23
Performance Data And Curve	25
Inlet Relief Options	26
Ordering Codes	27
Spool Options	29
Spool Positioners – Side of Return	31
Spool Positioners – Side of Lever Control	33
Spool Positioners – Side of Lever Control	34
Outlet Port Options	35
Installation and Maintenance	36
Technical Data	37

Additional Informations

Note: This catalog shows the product in the most standard configurations. For Other Configurations, more detailed information or special request, Please contact Customer Service Dpt.

Warning!: All specifications of this catalog refer to the standard product at this date (01/2020). GEMMA, oriented to a continuous improvement, reserves the right to discontinue, modify or revise the specifications, without notice.

GEMMA IS NOT RESPONSIBLE FOR ANY DAMAGE CAUSED BY AN INCORRECT USE OF THE PRODUCT.

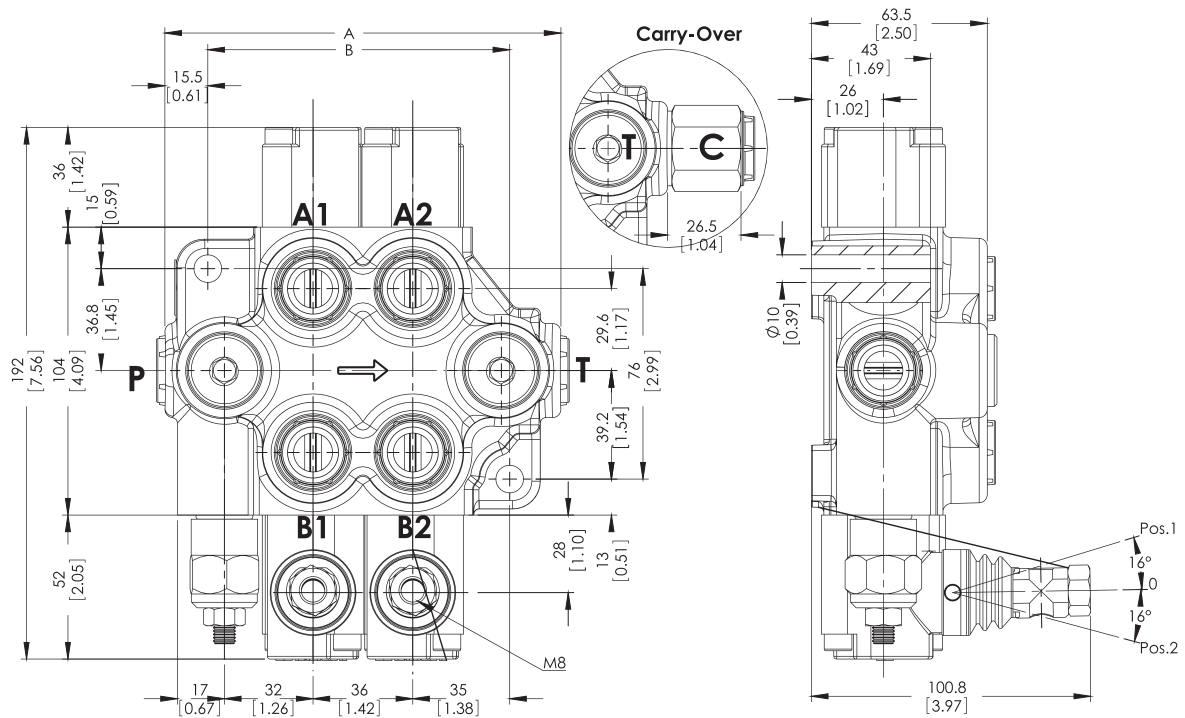
WORKING CONDITIONS

Nominal Flow Rating / Displacement	45 l/min	12 U.S.G.P.M
Maximum Working Pressure	315 Bar	4600 PSI
Max Back Pressure	25 Bar	360 PSI
Oil Temperature with NBR Seals	-20 to 80 C°	-4 to 176 F°
with FPM (Viton) Seals	-20 to 100 C°	-4 to 212 F°
Oil Viscosity – Operating Range	From 10 to 75 mm ² /s	From 10 to 75 cSt
Minimum / Maximum	10 / 400 mm ² /s	10 / 400 cSt
Oil Filtration	≤30 μ	
Ambiant Temperature Range	-35 to 60 C°	-31 to 140 F°
Number Of Spools	1 to 6	
Internal Leakage (at 100 bar (1450 PSI), 40C° (110 F°), 46 cSt – A(B)–T)	3 cm ³ /min	0,18 in ³ /min
Max. Level Of Contamination	19/16 – ISO 4406	

Not: This catalogue shows technical specifications measured with mineral oil of 46 mm²/s-46 cSt viscosity at 40 C° temperature.

Features

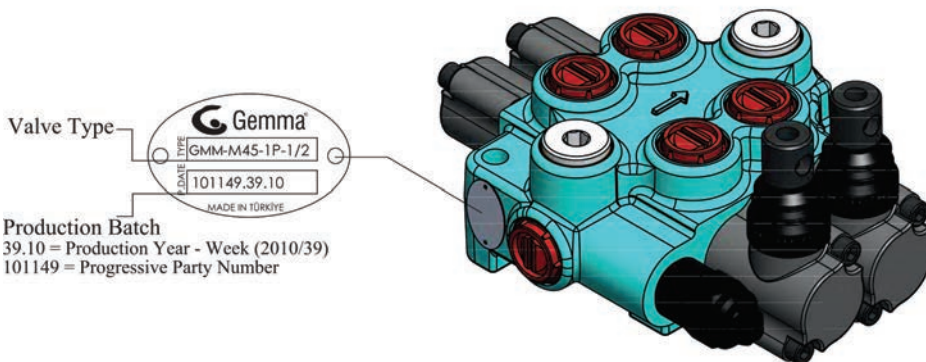
- Simple, compact and heavy duty designed monoblock valves from 1 to 6 sections for open and closed center hydraulic systems.
- Optional Carry-Over port only tandem circuit.
- Fitted with a main pressure relief valve.
- Interchangeable spool diameter is 16 mm – 0,63 in.
- Available manual, pneumatic, hydraulic and electro-pneumatic spool control kits.

DIMENSIONAL DATA


TYPE	A		B		Weight	
	mm	in	mm	in	Kg	lb
GMM-M45-1P	103	4,06	73	2,87	3.18	7,01
GMM-M45-2P	139	5,47	109	4,29	4.84	10,67
GMM-M45-3P	175	6,89	145	5,71	6.50	14,33
GMM-M45-4P	211	8,31	181	7,13	8.16	17,99
GMM-M45-5P	247	9,72	217	8,54	9.82	21,65
GMM-M45-6P	283	11,14	253	9,96	11.48	25,31

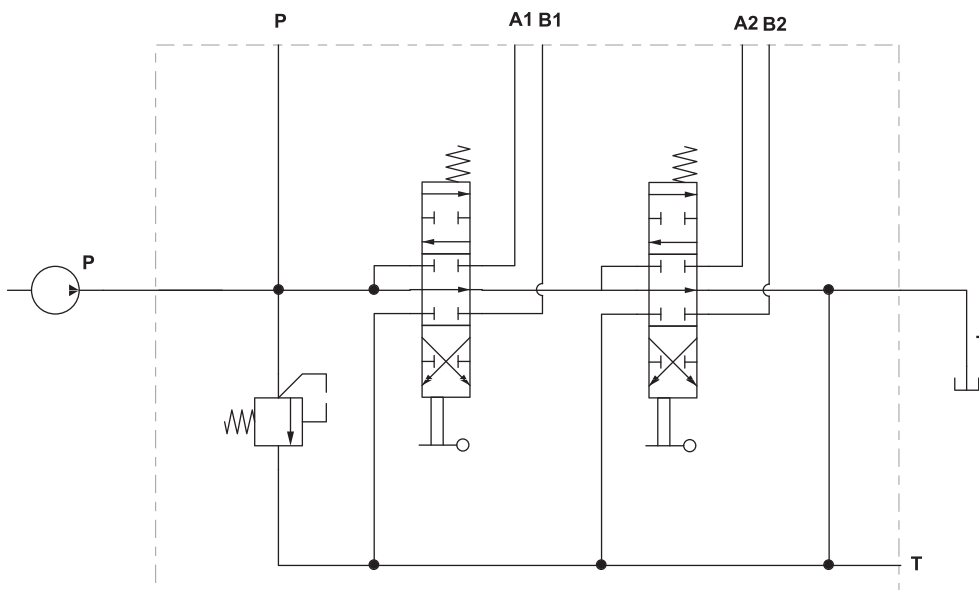
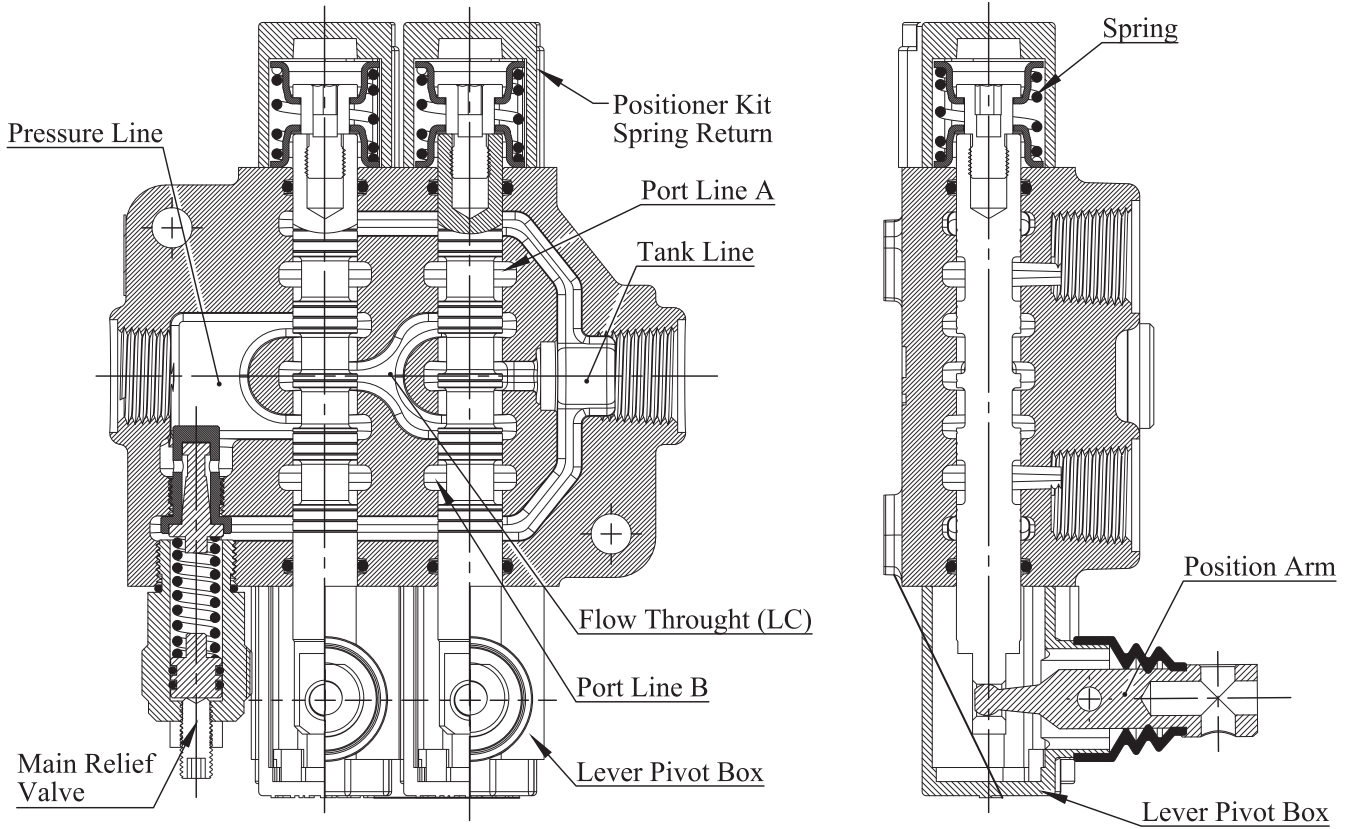
STANDARD THREADS

PORT	BSP (Iso 228)		UN-UNF (Iso 11926-1)	Metric (Iso 262)
	3/8" Series	1/2" Series		
P Inlet	G 3/8	G 1/2	3/4-16 UNF	M18x1.5
A-B Ports	G 3/8	G 1/2	9/16-18 UNF	M18x1.5
T Outlet	G 1/2	G 1/2	3/4-16 UNF	M18x1.5
Pneumatic	G 1/4	G 1/4	NPTF 1/8 - 27	NPTF 1/8 - 27



HYDRAULIC CIRCUIT

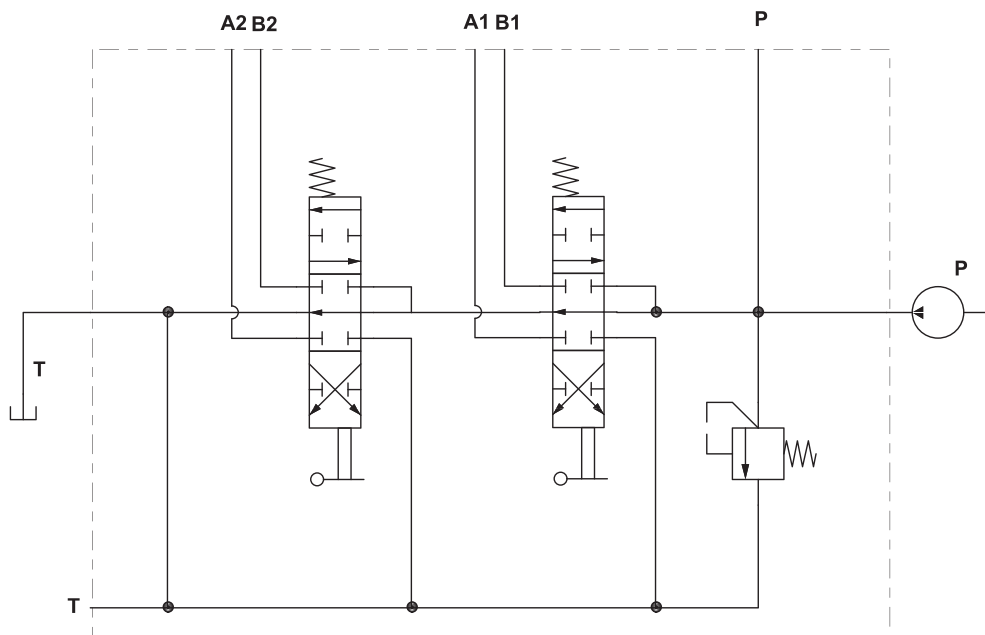
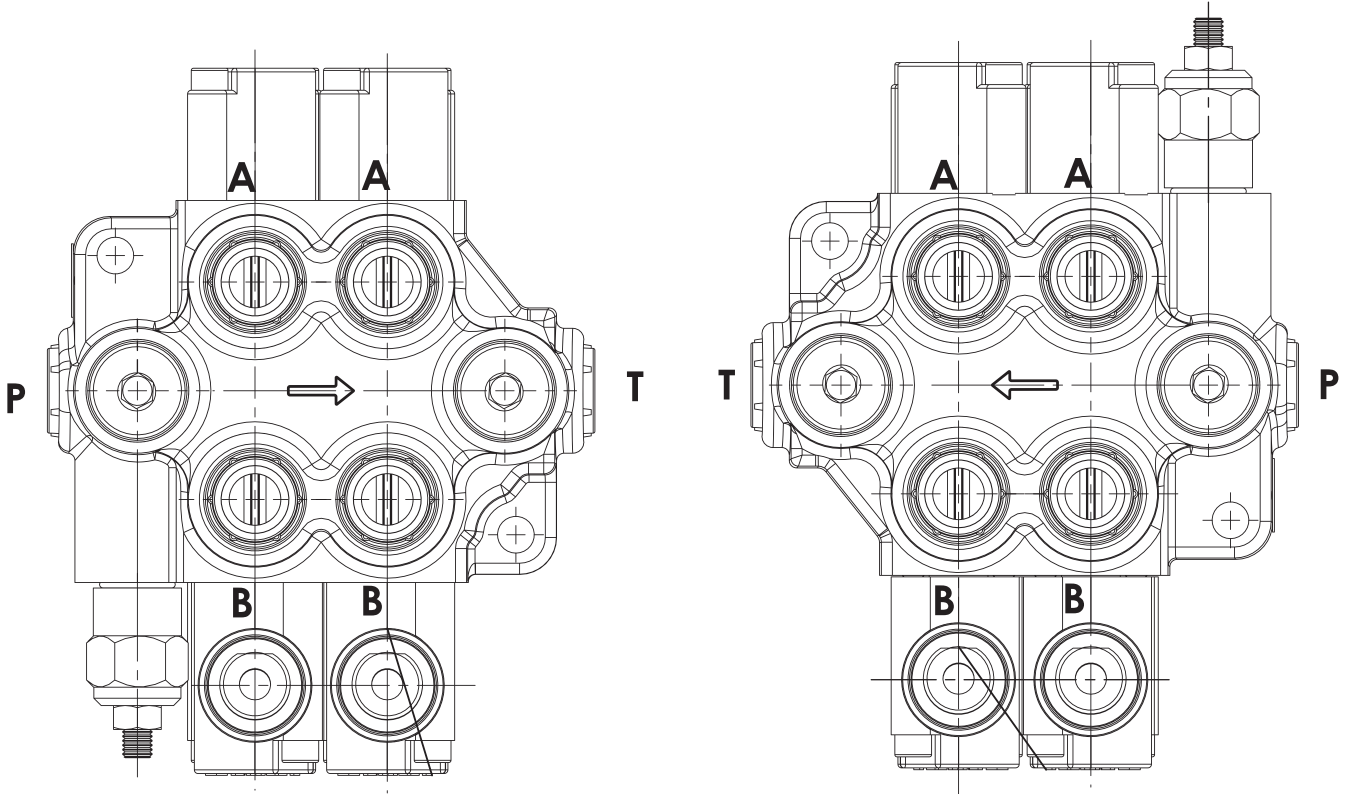
Standard Configurations With Side Inlet And Outlet Ports - LH



Code: GMM M45-2P / SMR2-120 / 1A-SR-STL/1A-SR-STL/PA1/SGT

Standard Configurations With Side Inlet And Outlet Ports - RH (Right Inlet)

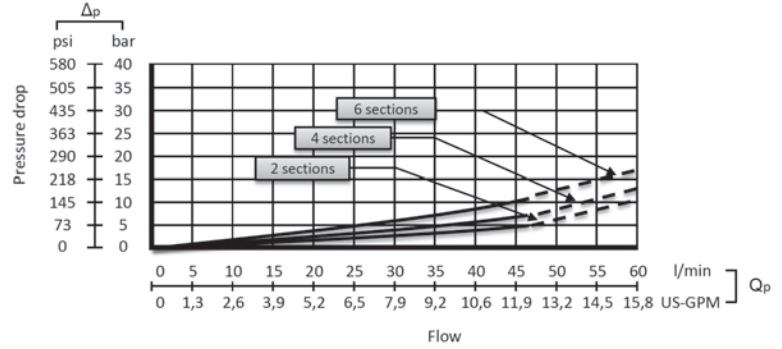
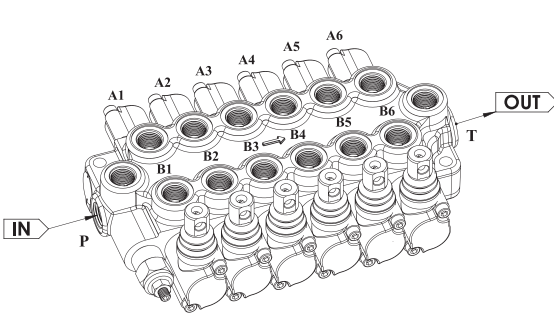
A symmetrical body allows the reverse assembly of spool and this with connected control kit (RH Configuration).



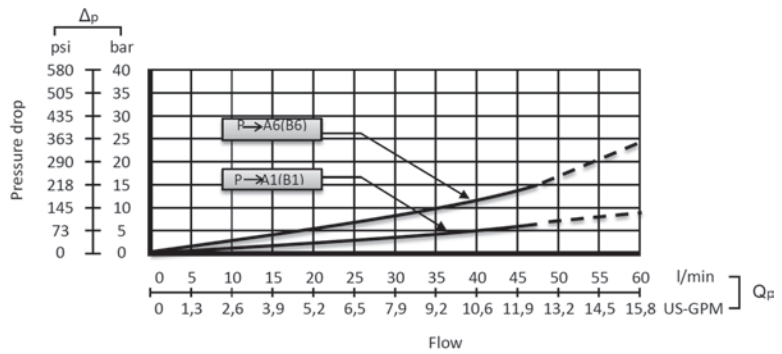
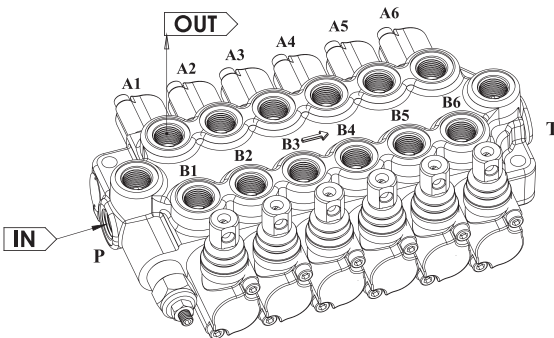
Code: GMM M45-2P / SMR2-120 / (RH) 1A-SR-STL/1A-SR-STL/PA1/SGT

PERFORMANCE DATA AND CURVE

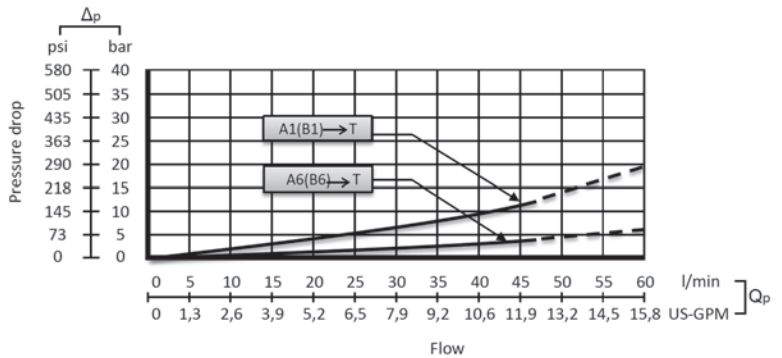
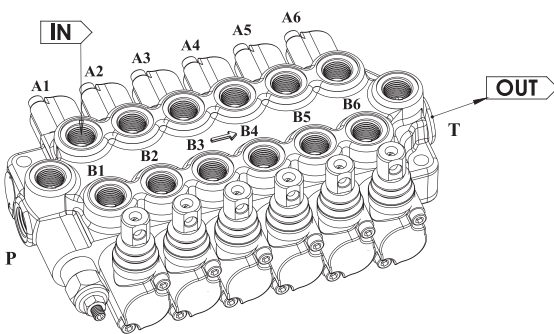
Open Center - Pressure Drop (P-T)



Inlet to Work Port - Pressure Drop (P-A/B)



Work Port to Outlet - Pressure Drop (A/B-T)



Note: Measured and chart value with spool type 1A.

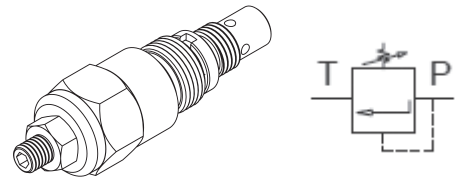
INLET RELIEF OPTIONS

Direct Pressure Relief Valve

Code:

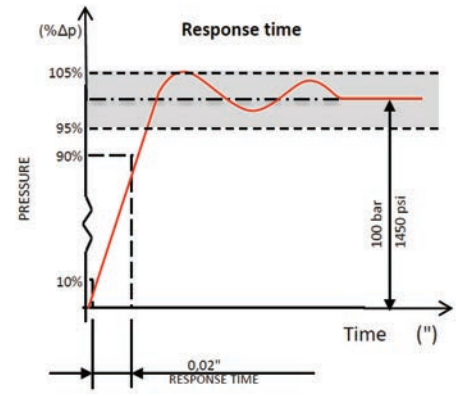
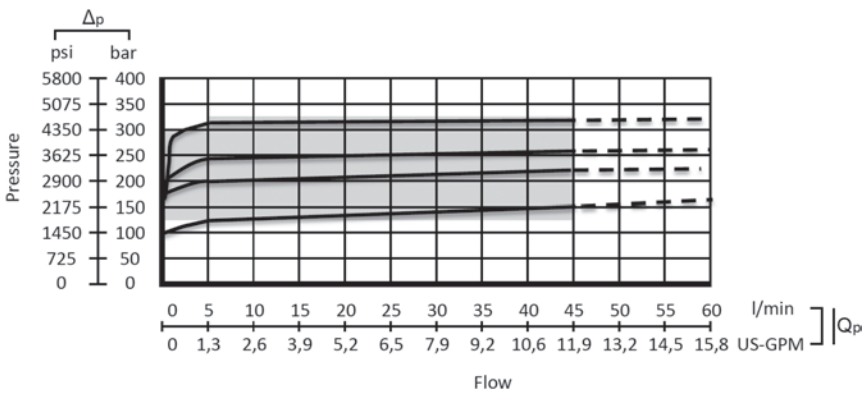
SMR2 – 120

- Pressure Setting Bar in (Standard 120 bar)
- Standard Main Relief Spring Type -2

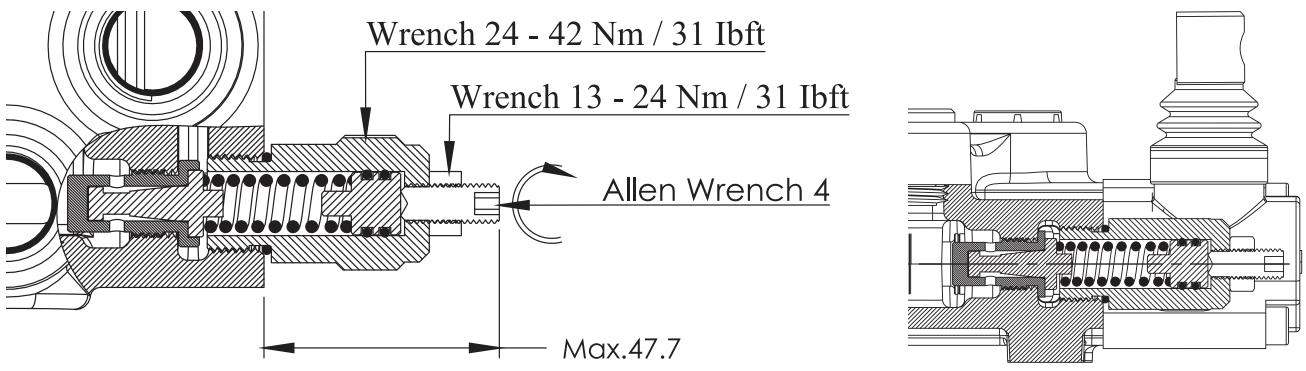


Performance Data

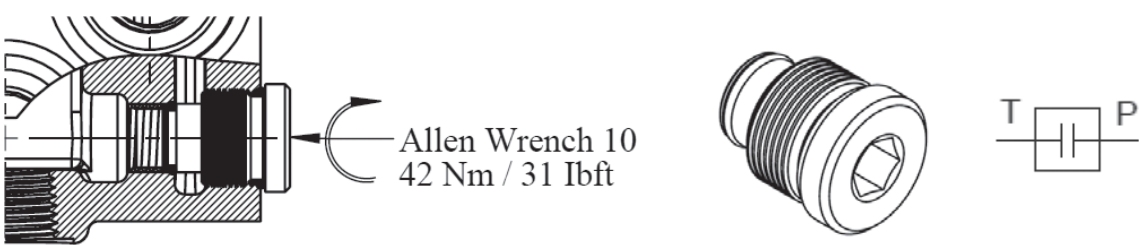
Spring Type Number: 3
Setting= 220 Bar -Range=160-315 Bar



Adjustment Type on Valve



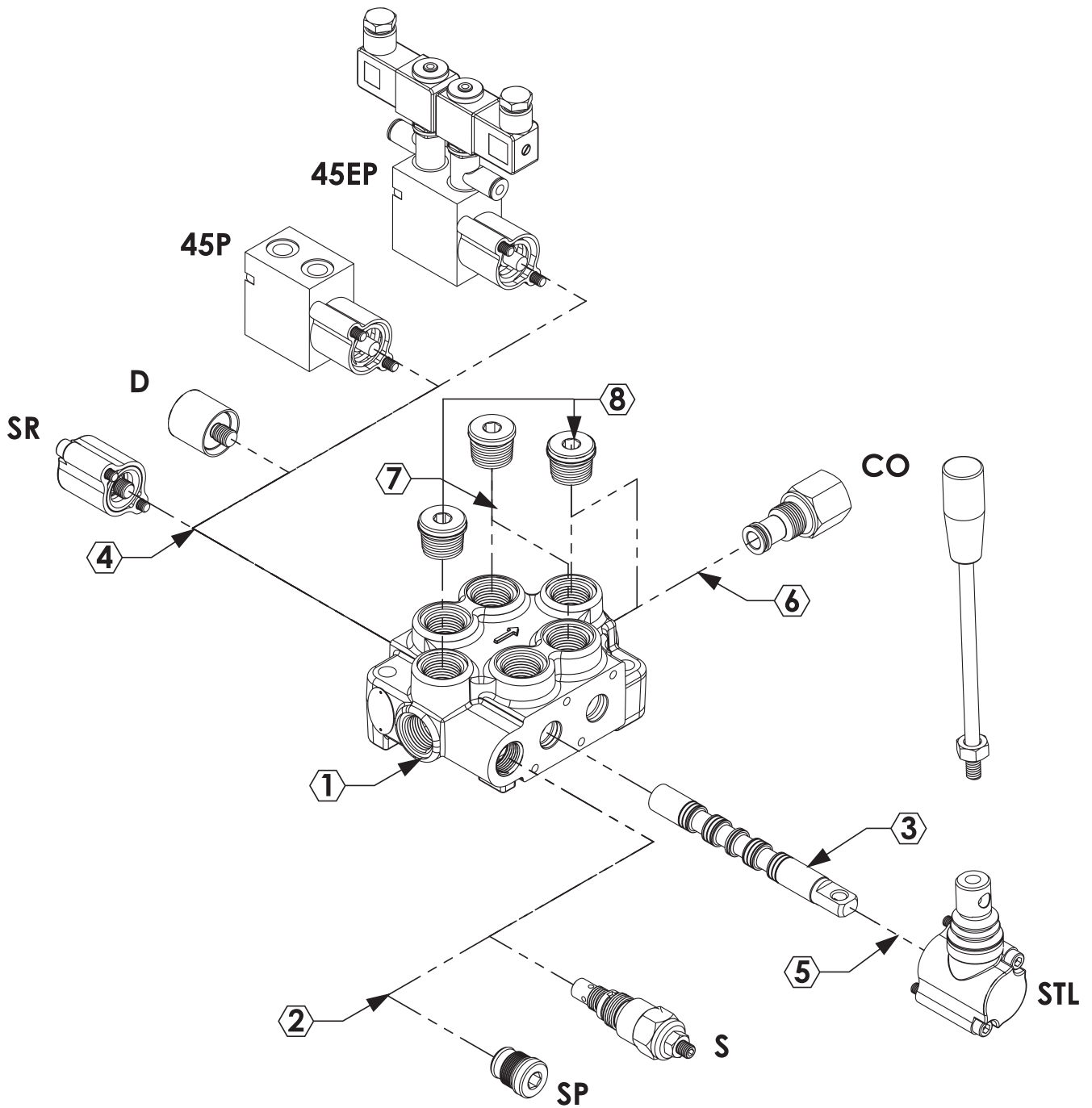
Relief Blanking Plug - WM



ORDERING CODES

Order Example

GMM M45-2P / SMR2-120 / 1A-SR-STL / 1A-45P-STL / CO - PL1 - P1 /SGT



ORDERING CODES
1- Valve Type and Body

M45 = Valve Type - (M) - Monoblok
(45) - Max. Flow Rate

1P = Body for 1 Section - (1BM145100)

2P = Body for 2 Sections - (1BM245100)

3P = Body for 3 Sections - (1BM345100)

4P = Body for 4 Sections - (1BM445100)

5P = Body for 5 Sections - (1BM545100)

6P = Body for 6 Sections - (1BM645100)

2- Pressure Relief Options

SMR = Standard direct pressure relief valve

SMR1-080 - (2SMR145080) - Range 0-80 bar
Setting 80 bar

SMR2-120 - (2SMR245120) - Range 60-200 bar
Setting 120 bar

SMR3-220 - (2SMR345220) - Range 160-315 bar
Setting 220 bar

SP = Standard relief plug - (2SP045100)

3- Spool Options

1A - (3SM145110) - 3 Positions, Double acting

2A - (3SM145120) - 3 Positions, Double acting
A to tank B Blocked

3A - (3SM145130) - 3 Positions, Double acting
B to tank A blocked

4A - (3SM145140) - 3 Positions, Double acting
A and B tank

5A - (3SM145150) - 3 Positions, Single acting on
A (A to tank)

6A - (3SM145160) - 3 Positions, Single acting on
B (B to tank)

4- Spool Positioners

SR = Spring Return in neutral position -
(4SR045100)

D = Detent in position 1, neutral and 2 -
(4D045100)

45P = ON/OFF Pneumatic - (445P045100)

45EP = 12 / 24 VDC ON/OFF electro-pneumatic -
(445EP045112)

5- Lever Options

STL = Standard Lever - (5STL045100)

6- Output Options

PA1(T) = G1/2" Top output plug - (6PL1040112)

PA1(S) = G1/2" Side output plug - (6PL1040112)

CO = G1/2" Carry-Over Connector - (6CO045100)

7- Ports Plug Options "If Required"

PL1(5A) = Plug for single action spool for 5A
G1/2 - (6PL1040112)

PL1(6A) = Plug for single action spool for 6A
G1/2 - (6PL1040112)

PL2(5A) = Plug for single action spool for 5A
G3/8 - (7PL2045138)

PL2(6A) = Plug for single action spool for 6A
G3/8 - (7PL2045138)

*Page 13 for detail spool options.

8- Ports Input Plug Options

PI1(T) = G1/2 Top input - (6PL1040112)

PI1(S) = G1/2 Side input - (6PL1040112)

PI2(T) = G3/8 Top input - (7PL2045138)

PI2(S) = G3/8 Side input - (7PL2045138)

9- Ports Thread Options

SGT1 = 1/2" Series Port Options - (9P045112)

SGT2 = 3/8" Series Port Options - (9P045138)

UNF = UNF Series Port Options - (9U045138)

M = Metric Series Port Options - (9M045138)

*Page 4 for detail port information.

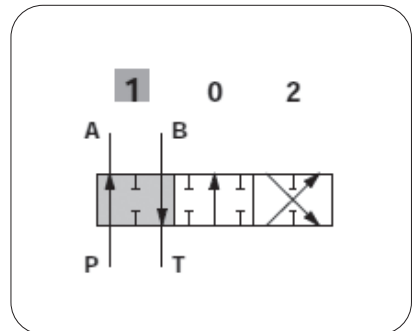
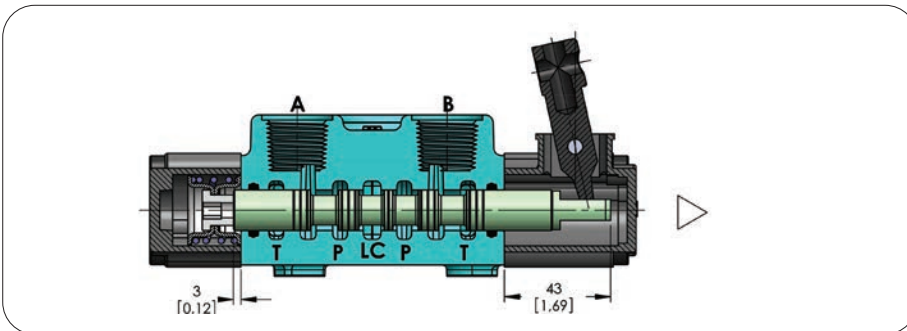
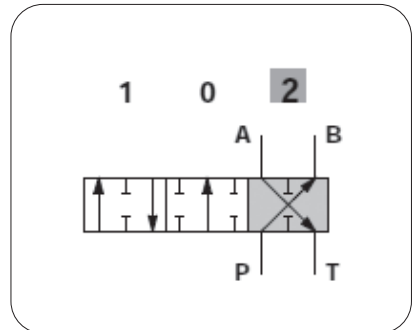
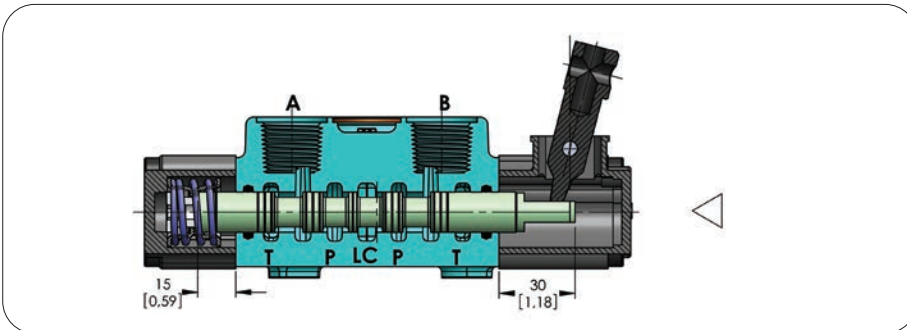
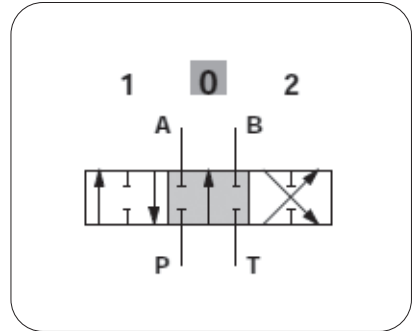
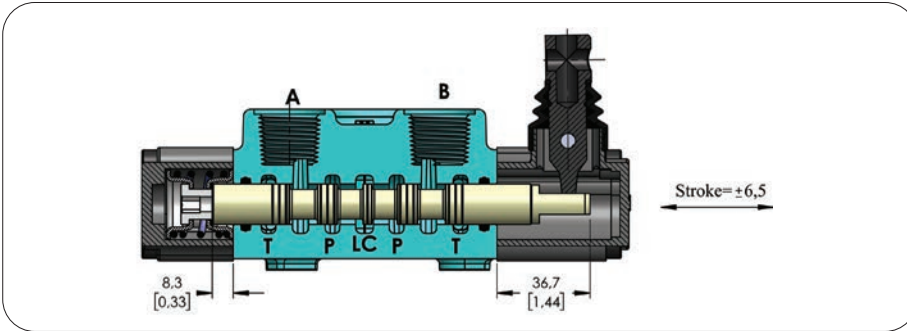
HandLever

L = Standard HandLever (L=120mmxM8) - (7L040100)

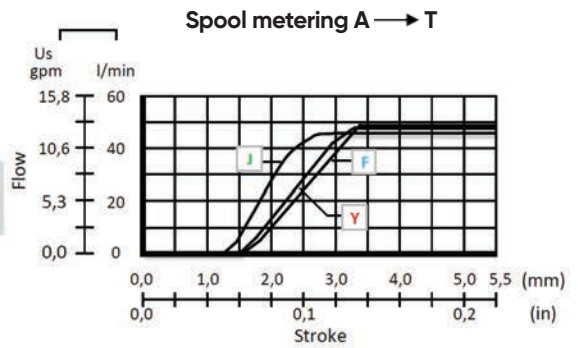
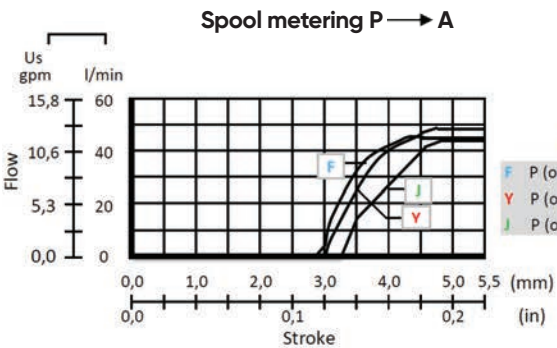
HL = Remote Cable Kit - (80HL80100)

SPOOL OPTIONS

Spool Type - 1A

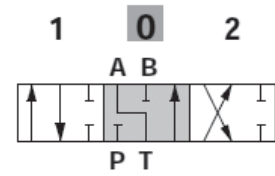
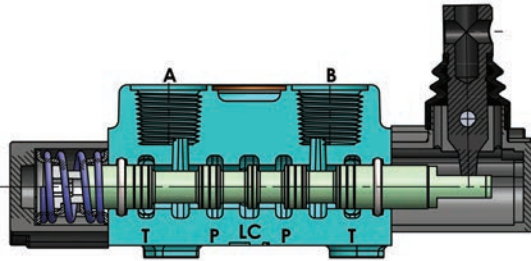


Performance Curve And Data

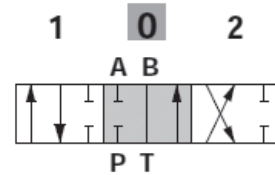
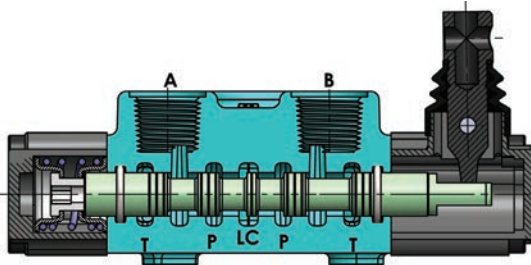


SPOOL OPTIONS

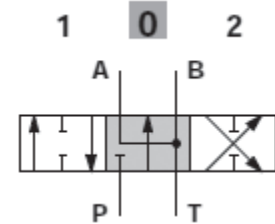
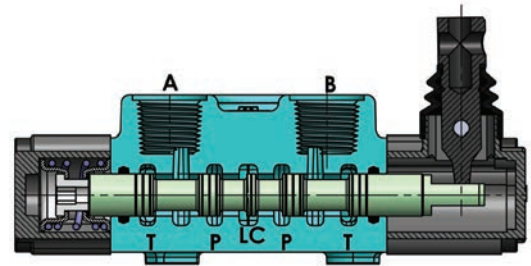
Spool Type - 2A



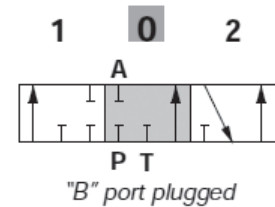
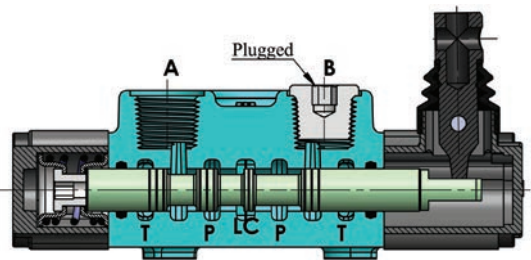
Spool Type - 3A



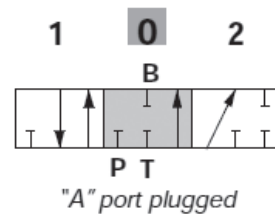
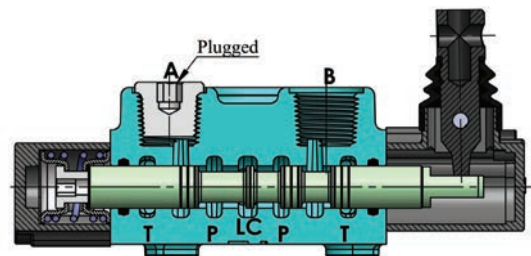
Spool Type - 4A



Spool Type - 5A



Spool Type - 6A



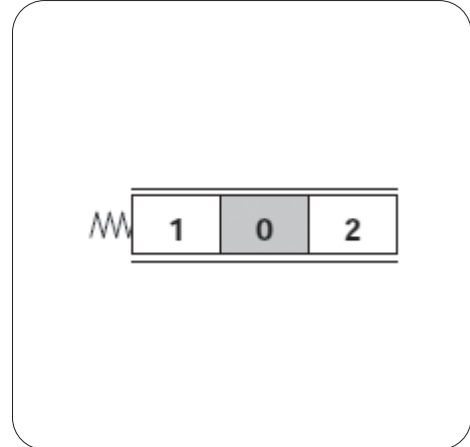
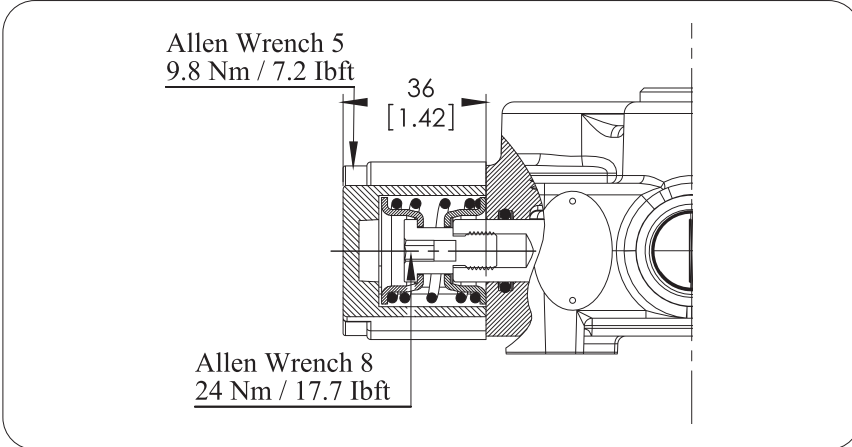
SPOOL POSITIONERS – SIDE OF RETURN

With Spring Return in Neutral Position

Kit No: **SR**

Sectional Appearance

Diagram

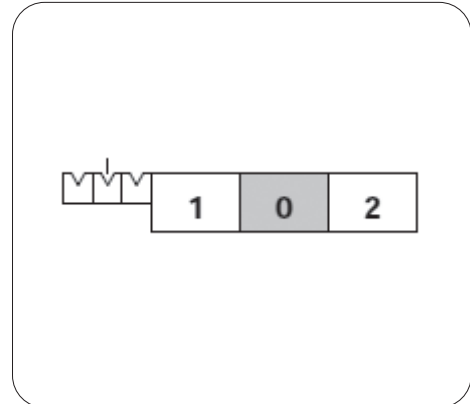
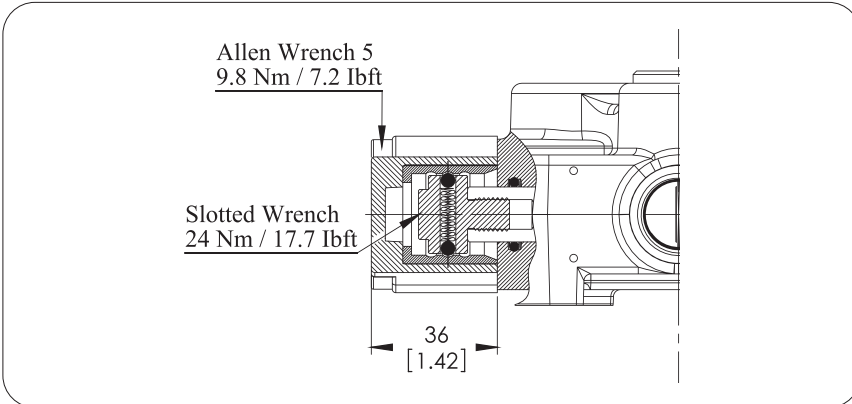


With Detent

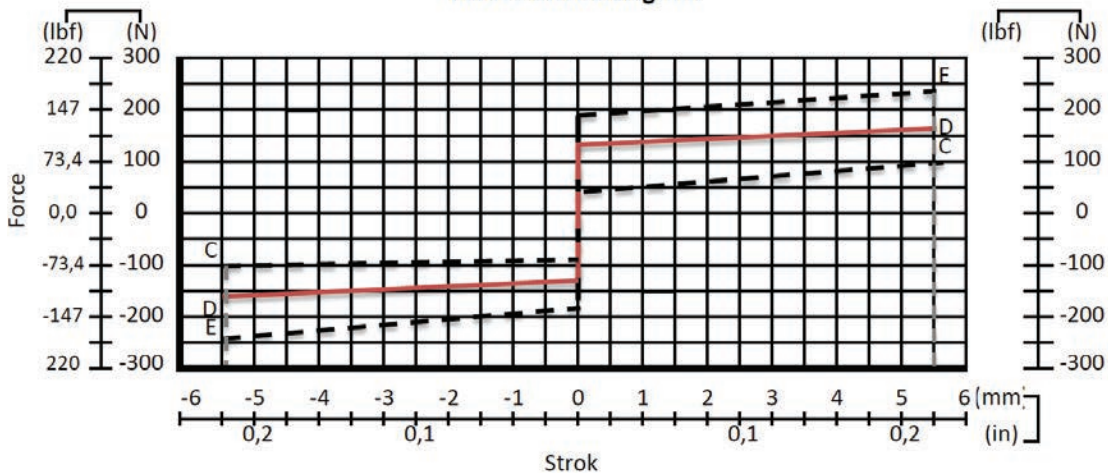
Kit No: **D**

Sectional Appearance

Diagram



Force - stroke diagram

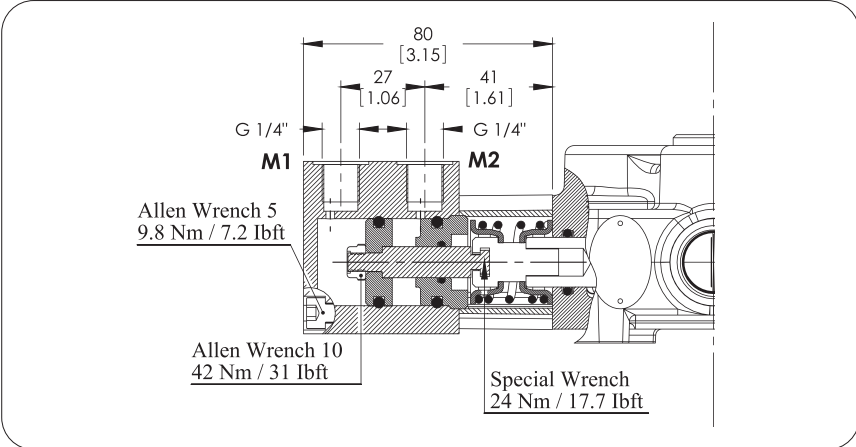


SPOOL POSITIONERS – SIDE OF RETURN

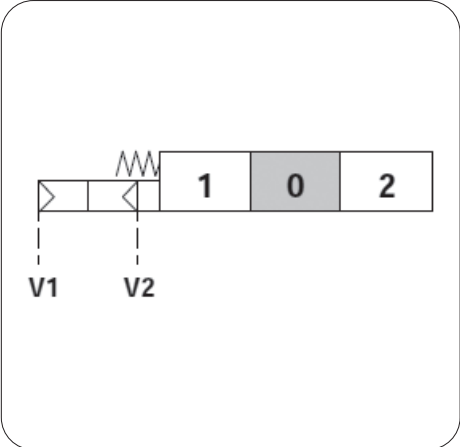
ON/OFF Pneumatic Control

Kit No: **45P**

Sectional Appearance



Diagram

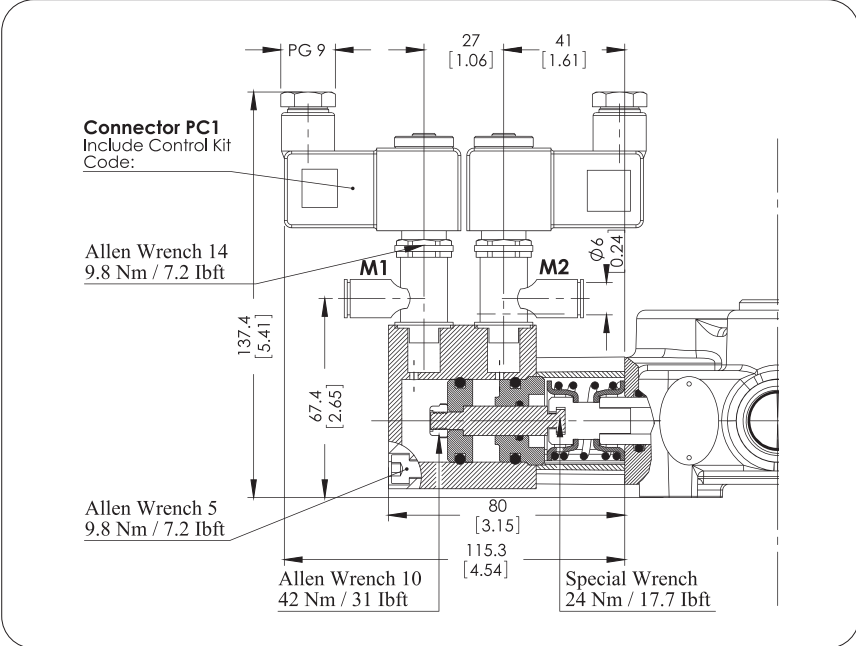


Operating Features
 Pilot Pressure: 6 Bar (Max. 10) / 87 Psi (Max. 145)

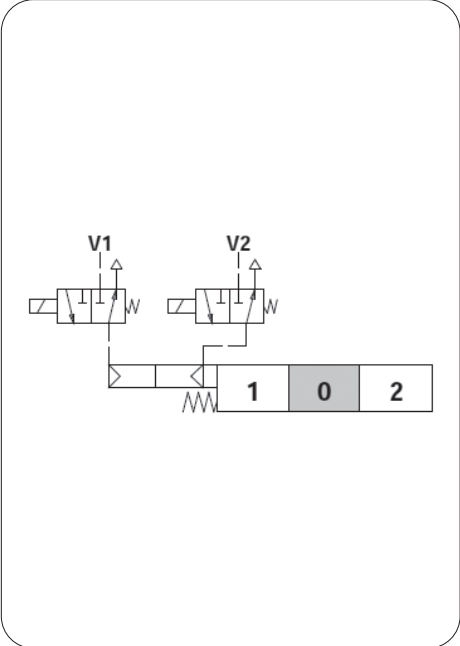
ON/OFF Electro-Pneumatic Control

Kit No: **45EP**

Sectional Appearance



Diagram



Operating Features
 Pilot Pressure: 6 Bar (Max. 10) / 87 Psi (Max. 145)

Solenoid Operating Features
 Nominal Voltage.....: 12VDC / 24 VDC
 Power Rating.....: 6 W

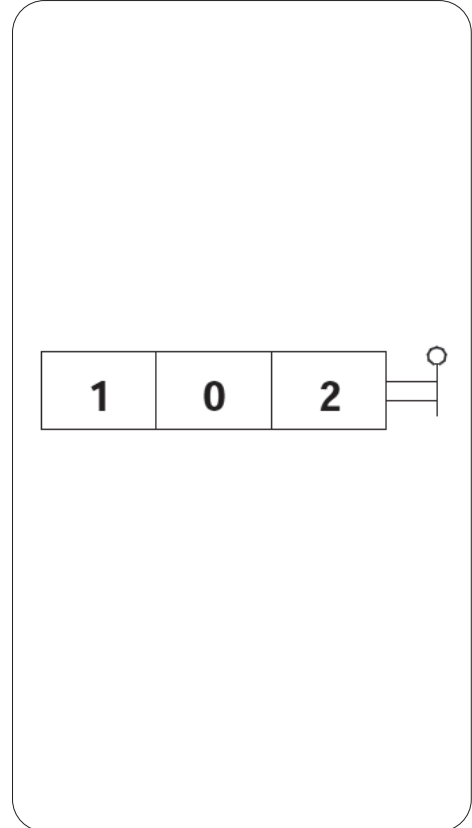
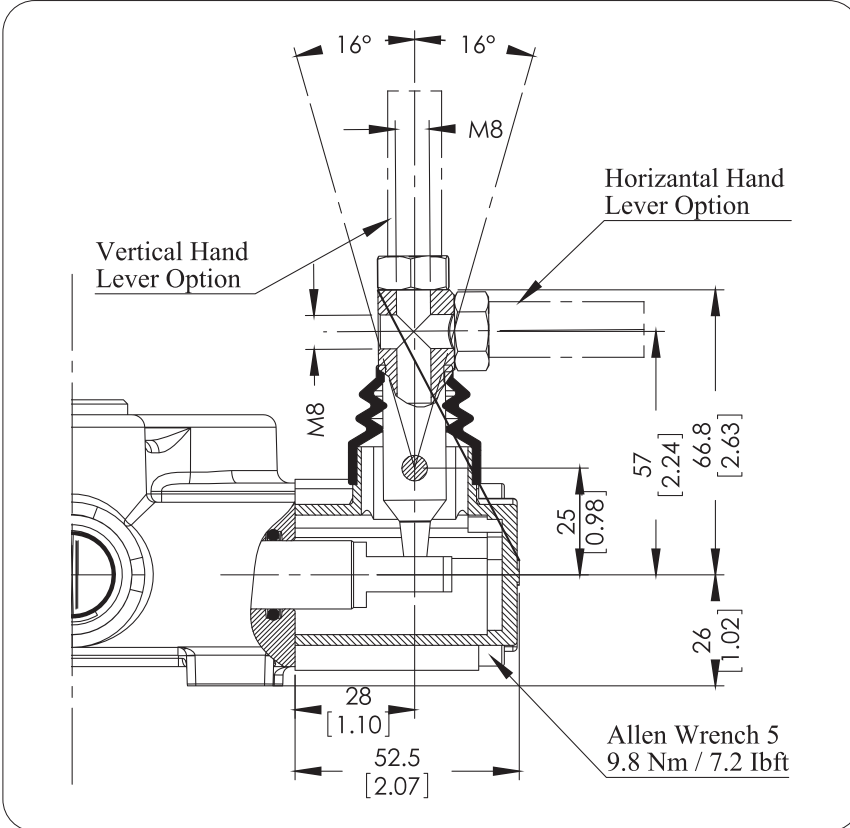
SPOOL POSITIONERS – SIDE OF LEVER CONTROL

Lever Controls

Kit No: **STL - L0**

Sectional Appearance

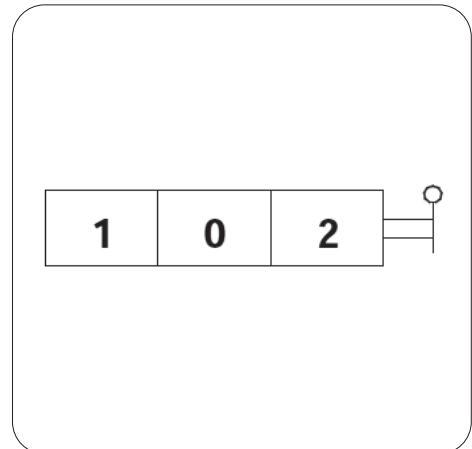
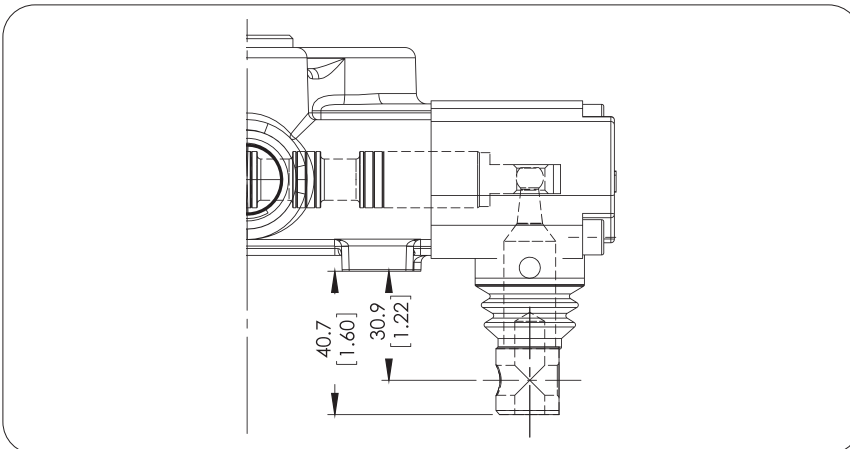
Diagram



Kit No: **STL - L180**

Sectional Appearance

Diagram



Note: Arm lever pivot box is aluminium cap protected. And it can be rotated 180°.

SPOOL POSITIONERS – SIDE OF LEVER CONTROL

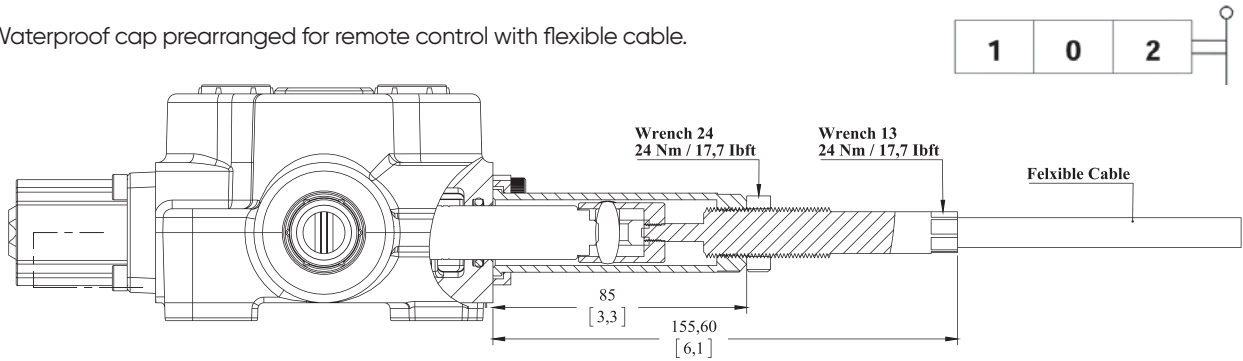
Lever Controls - Cable Control

Kit No: HL

Sectional Appearance

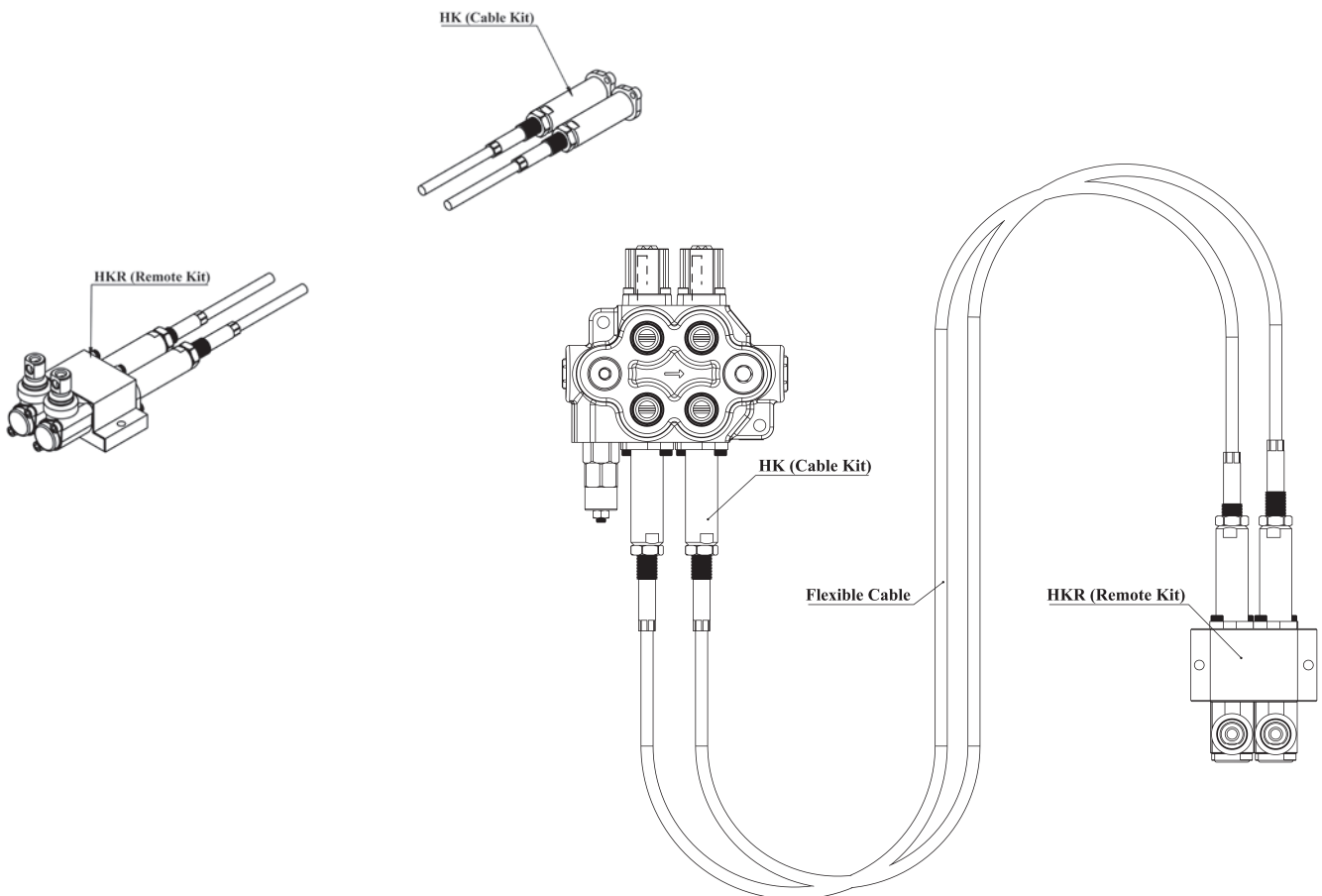
Diagram

Waterproof cap prearranged for remote control with flexible cable.



Note: Remote cable control has several options. Please indicate the cable length demanded and contact our sales department.

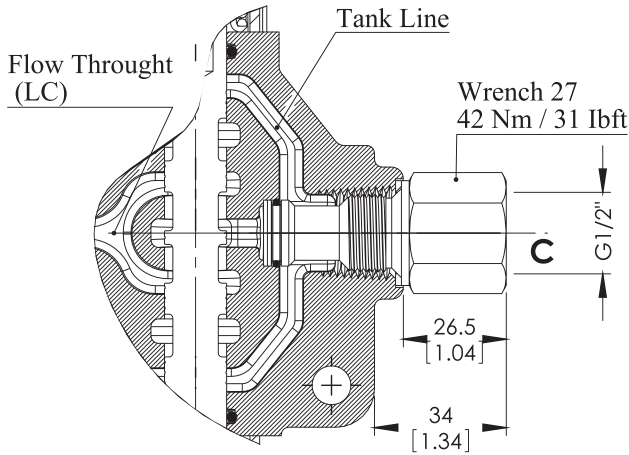
Example Operation



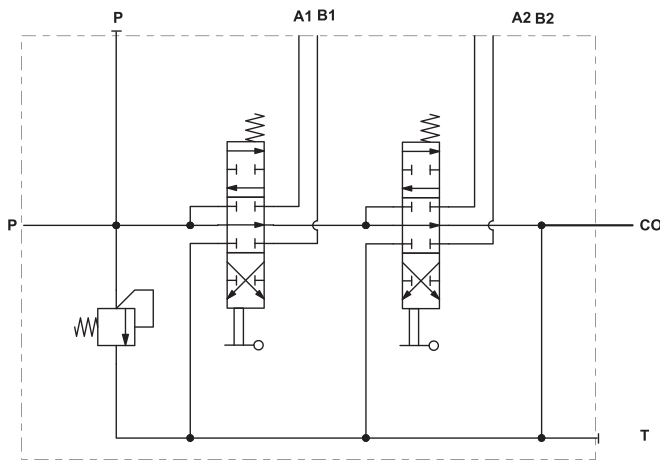
OUTLET PORT OPTIONS

Carry - Over Connection

Kit No: **CO**

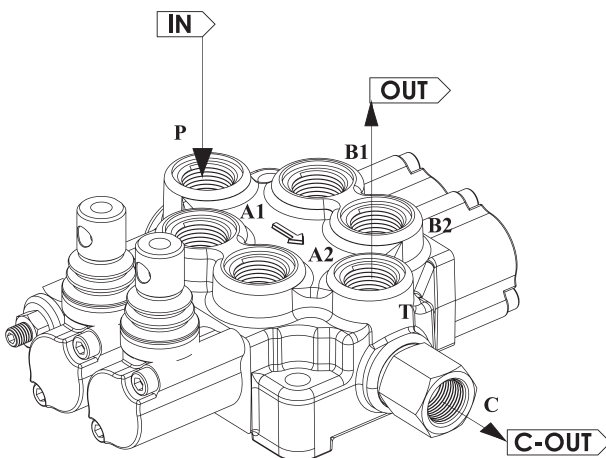


Sectional Appearance



Hydraulic Circuit

Code: GMM M45-2P /
SMR2-120 / 1A-SR-STL/
1A-SR-STL/CO-PA1/SGT



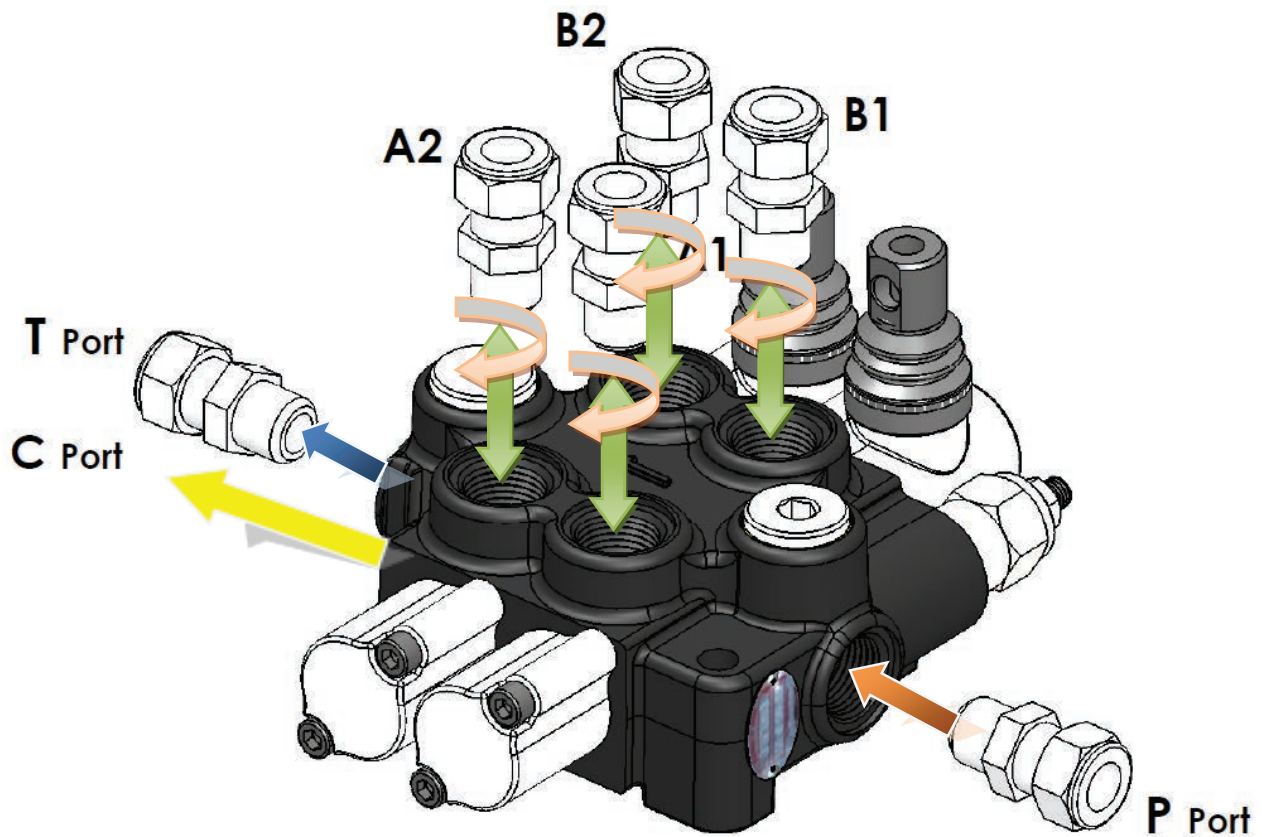
Direction of Port Connected

SGT : See page 5 for Standard center.

INSTALLATION AND MAINTENANCE

The GMM M45 valve is assembled and tested as per the technical specification of this catalog. Before the final installation on your equipment, follow the below recommendation:

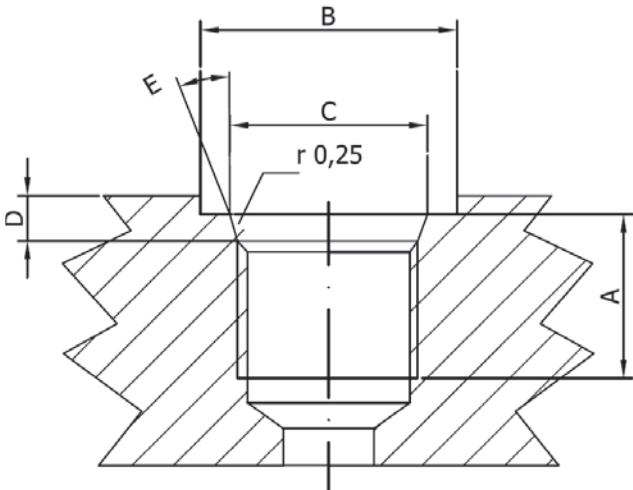
- The valve can be assembled in any position, in order to prevent body deformation and spool sticking, mount the product on a flat surface;
- In order to prevent the possibility of water entering to the lever box and spool control kit, do not use high pressure wash down directly on the valve;
- Before painting, ensure plastic port plugs are tightly in place.



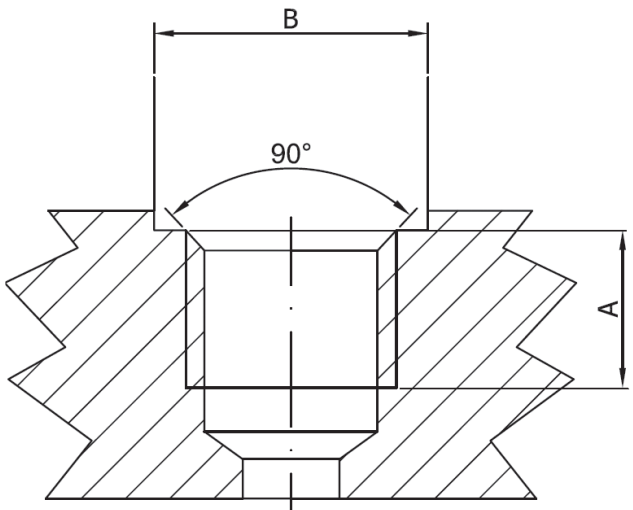
Threads Type (Nm / lbft)	P Port	A and B Port	T Port
BSP (ISO 228/1)	G 3/8	G 3/8	G 1/2
With O--Ring seal	35 / 25.8	35 / 25.8	50 / 36.9
With copper washer	40 / 29.5	40 / 29.5	60 / 44.3
With steel and rubber washer	30 / 22.1	30 / 22.1	60 / 44.3
BSP (ISO 228/1)	G 1/2	G 1/2	G 1/2
With O--Ring seal	50 / 36.9	50 / 36.9	50 / 36.9
With copper washer	60 / 44.3	60 / 44.3	60 / 44.3
With steel and rubber washer	60 / 44.3	60 / 44.3	60 / 44.3
UN--UNF (ISO 11926--1)	3/4--16 UNF--2B	9/16--18 UNF--2B	3/4--16 UNF--2B
With O--Ring seal	50 / 36.9	30 / 22.1	50 / 36.9
METRIC (ISO 262)	M18 x 1.5	M18 x 1.5	M18 x 1.5
With O--Ring seal	35 / 25.8	35 / 25.8	35 / 25.8
With copper washer	40 / 29.5	40 / 29.5	40 / 29.5
With steel and rubber washer	40 / 29.5	40 / 29.5	40 / 29.5

TECHNICAL DATA

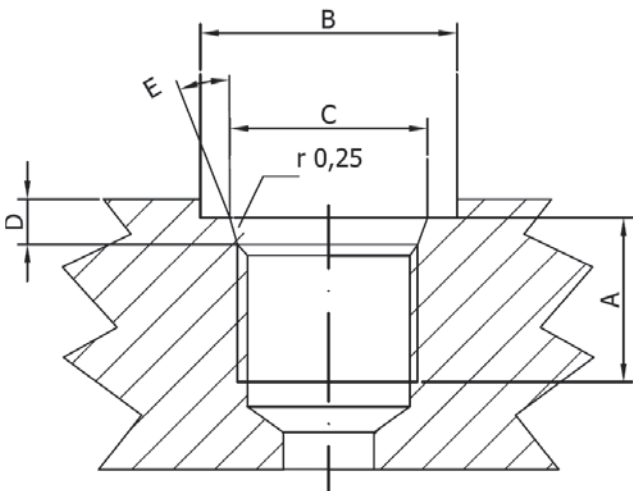
Ports Dimensional Data



SAE UN-UNF (ISO 725)							
Dimensions		9/16-18		3/4-16		7/8-14 UNF	
mm	in	UNF SAE6		UNF SAE8		SAE10	
A		13	0,51	15	0,59	17	0,67
B		25	0,83	30	1,18	34	1,34
C		13,6	0,61	20,6	0,81	23,9	0,94
D		2,5	0,10	2,5	0,10	2,5	0,10
E		15°		15°		15°	



BSP (ISO 228)							
Dimensions		G1/4		G3/8		G1/2	
mm	in						
A		14	0,55	14	0,55	16	0,63
B		19	0,75	23	0,91	27	1,06



METRIC (ISO 262)							
Dimensions		M18x1,5		M22x1,5			
mm	in	ISO 262		ISO 262			
A		14	0,55	16	0,63		
B		27,5	1,08	31,5	1,24		