

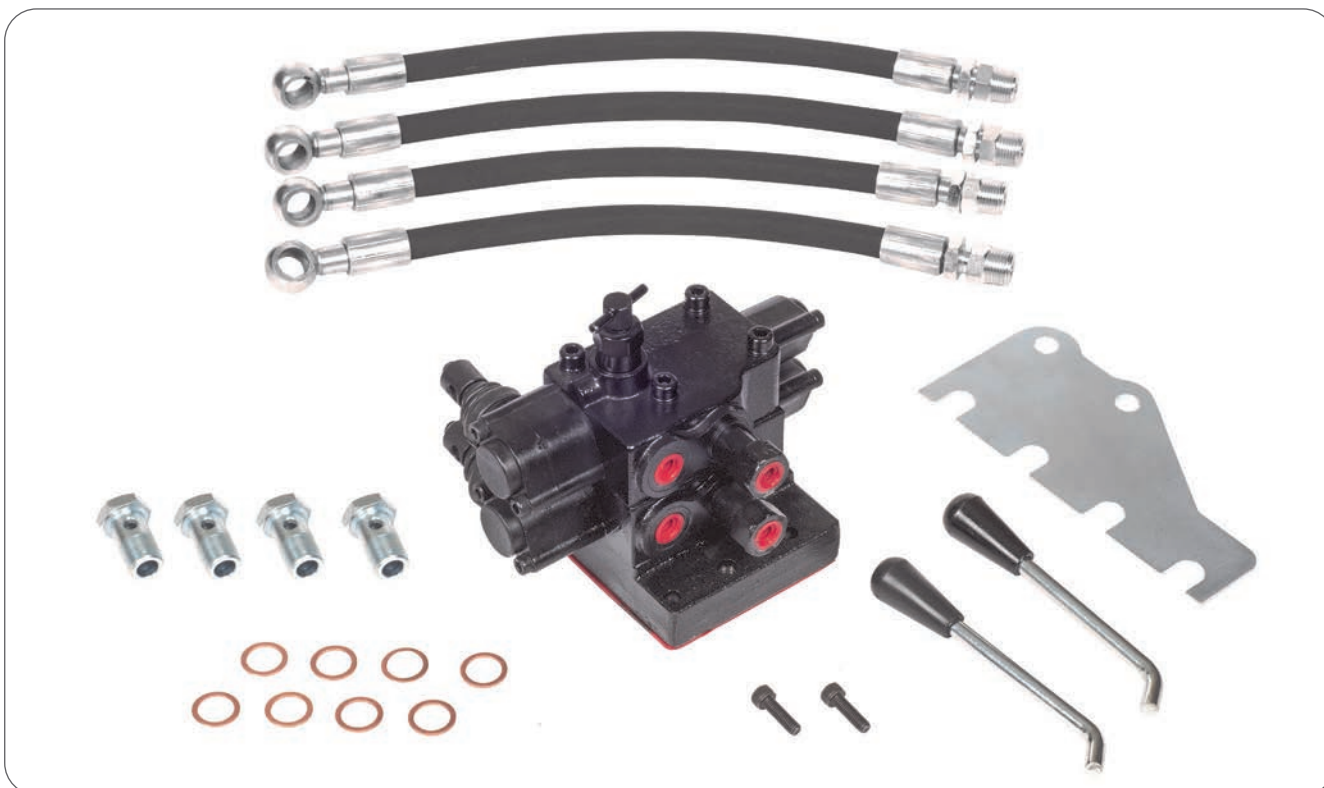


SPECIAL TRACTOR  
VALVES

**GMM-STY**

CE





## CONTENTS

Working Conditions	409
Dimensional Data	410
Hydraulic Circuit	411
Performance Data And Curve	412
Ports And Mounting Face	413
Ordering Codes And Installation	414

### Additional Informations

**Note:** This catalog shows the product in the most standard configurations. For Other Configurations, more detailed information or special request, Please contact Customer Service Dpt.

**Warning!** :All specifications of this catalog refer to the standard product at this date (10/2019). GEMMA, oriented to a continuous improvement, reserves the right to discontinue, modify or revise the specifications, without notice.

GEMMA IS NOT RESPONSIBLE FOR ANY DAMAGE CAUSED BY AN INCORRECT USE OF THE PRODUCT.

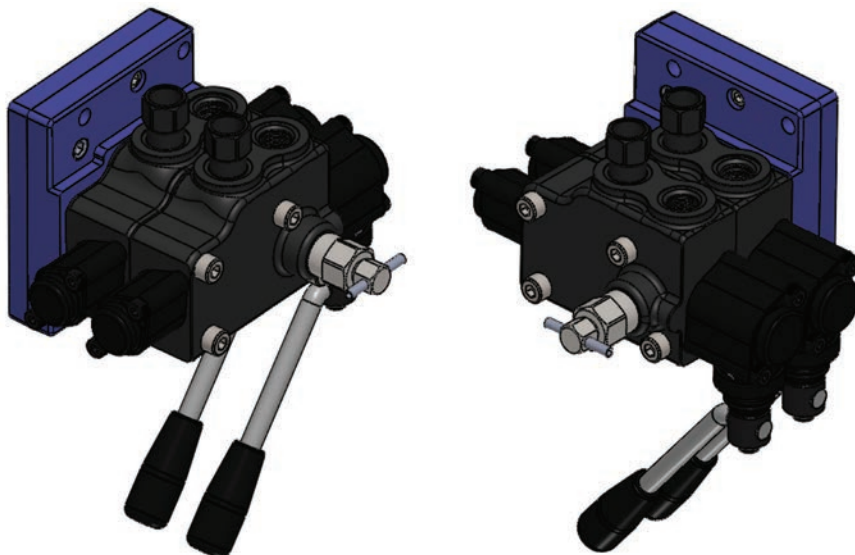
**WORKING CONDITIONS**

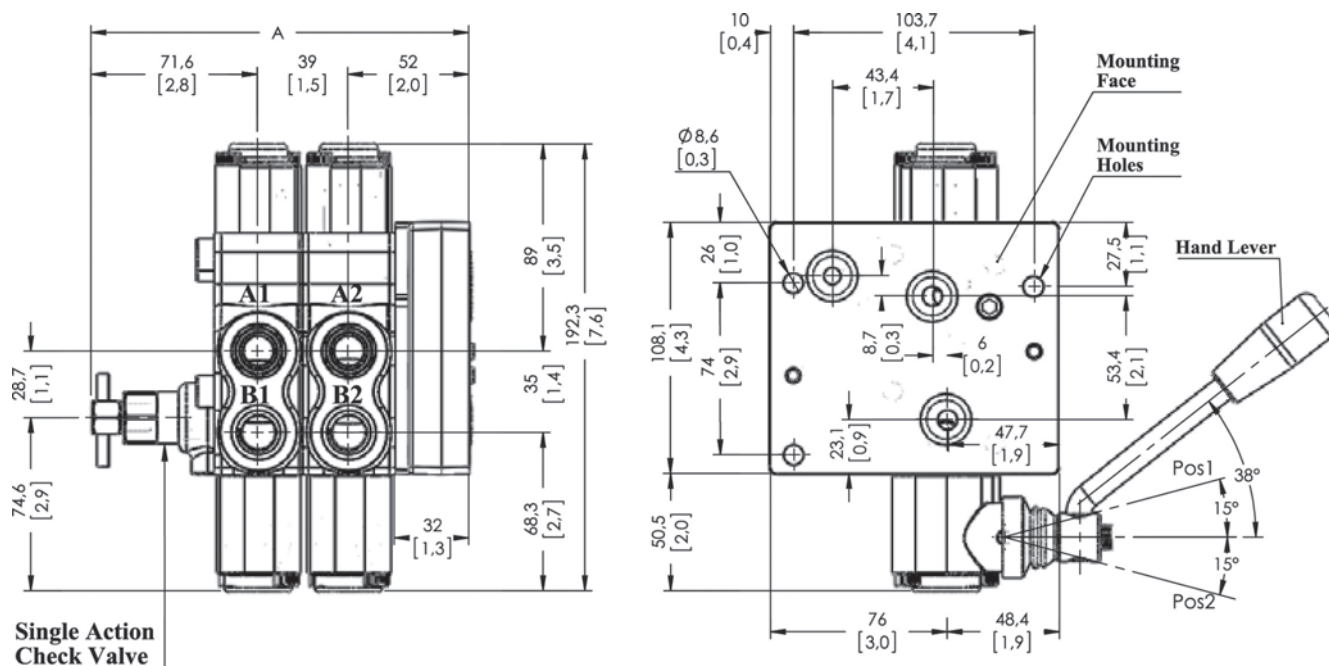
Nominal Flow Rating / Displacement	45 l/min	12 U.S.G.P.M
Maximum Working Pressure	315 Bar	4600 PSI
Max Back Pressure	25 Bar	360 PSI
Oil Temperature with NBR Seals	-20 to 80 C°	-4 to 176 F°
with FPM (Viton) Seals	-20 to 100 C°	-4 to 212 F°
Oil Viscosity – Operating Range	From 10 to 75 mm <sup>2</sup> /s	From 10 to 75 cSt
Minimum / Maximum	10 / 400 mm <sup>2</sup> /s	10 / 400 cSt
Oil Filtration	≤30 μ	
Ambiant Temperature Range	-35 to 60 C°	-31 to 140 F°
Number Of Spools	1 to 3	
Internal Leakage (at 100 bar (1450 PSI), 40C° (110 F°), 46 cSt – A(B)–T)	3 cm <sup>3</sup> /min	0,18 in <sup>3</sup> /min
Max. Level Of Contamination	19/16 – ISO 4406	

**Not:** This catalogue shows technical specifications measured with mineral oil of 46 mm<sup>2</sup>/s-46 cSt viscosity at 40 C° temperature.

**Features**

- Simple, compact and heavy duty designed sectional truck mounted valves from 1 to 3 sections for open center hydraulic systems.
- Interchangeable spool diameter is 16 mm – 0,63 in.
- It can be work working section and truck lift for some time.
- It has low tank pressure for additional tank line.
- It can be use single and double acting for only last working section.



**DIMENSIONAL DATA**

**Single Action Check Valve**

TYPE	A		WEIGHT	
	mm	in	Kg	lb
GMM-STY - 2	123,5	4,86	6,50	13,33
GMM-STY - 4	162,5	6,40	10,00	22,05
GMM-STY - 6	201,5	7,93	13,50	29,76

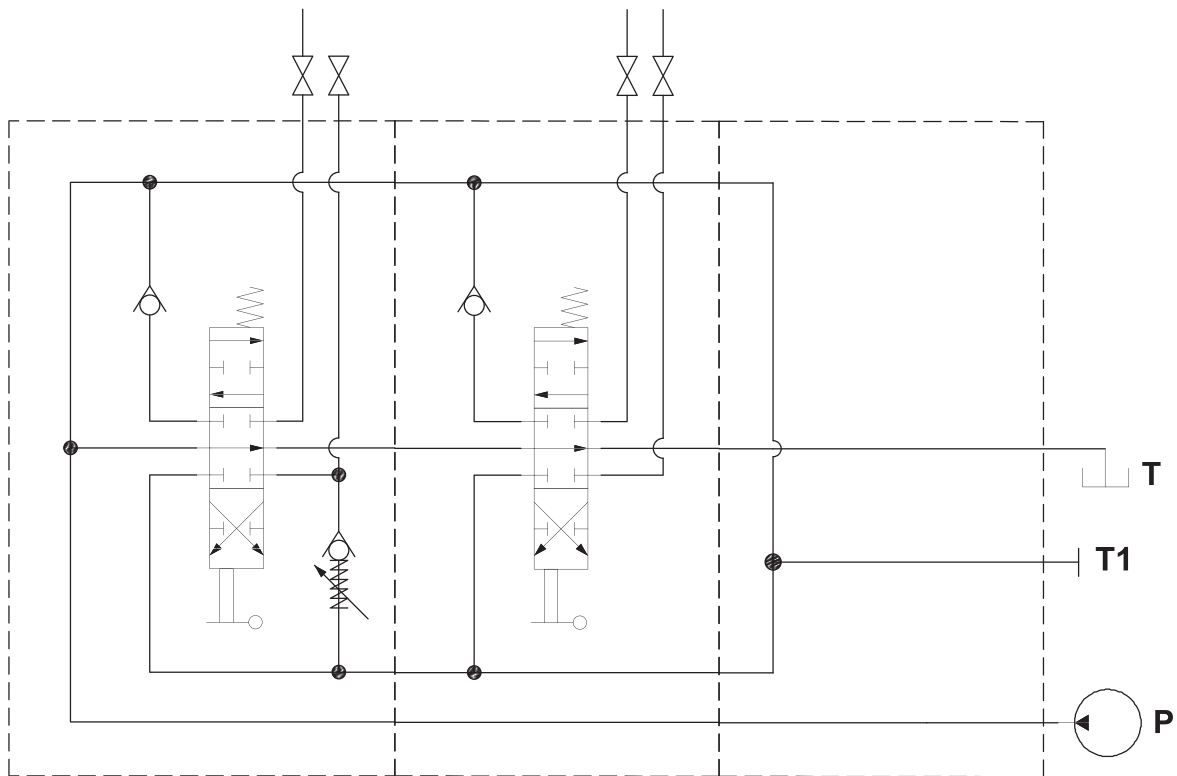
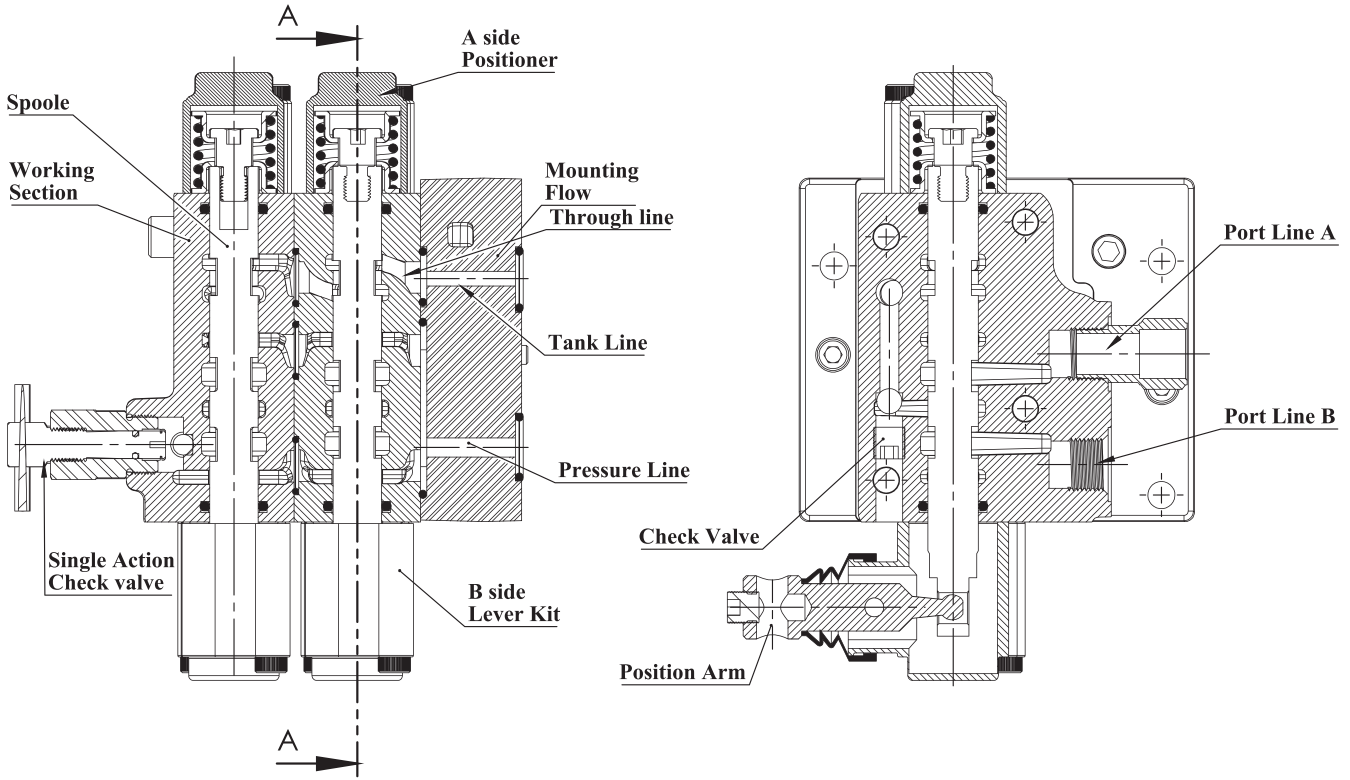
**STANDARD THREADS**

PORT	BSP (Iso 228)		UN-UNF (Iso 11926-1)	Metric (Iso 262)
	3/8" Series	1/2" Series		
P Inlet	G 3/8	G 1/2	Plate Mounted	M18x1.5
A-B Ports	G 3/8	G 1/2	9/16-18 UNF	M18x1.5
T Outlet	G 3/8	G 1/2	Plate Mounted	M18x1.5

**Compatible Models**

Steyr All Models

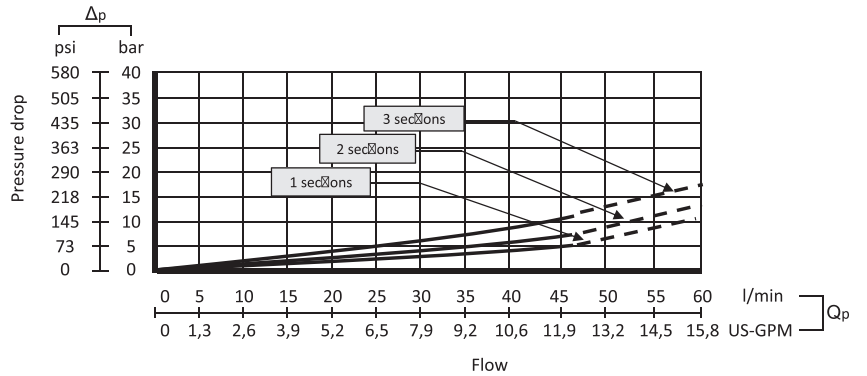
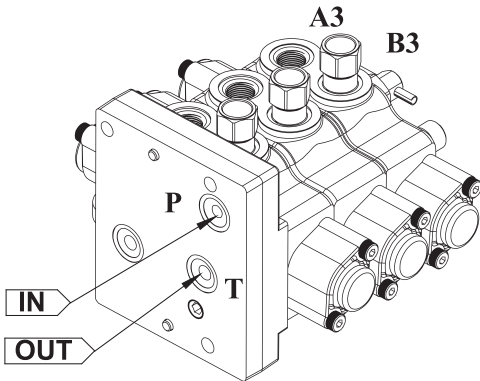
**HYDRAULIC CIRCUIT**



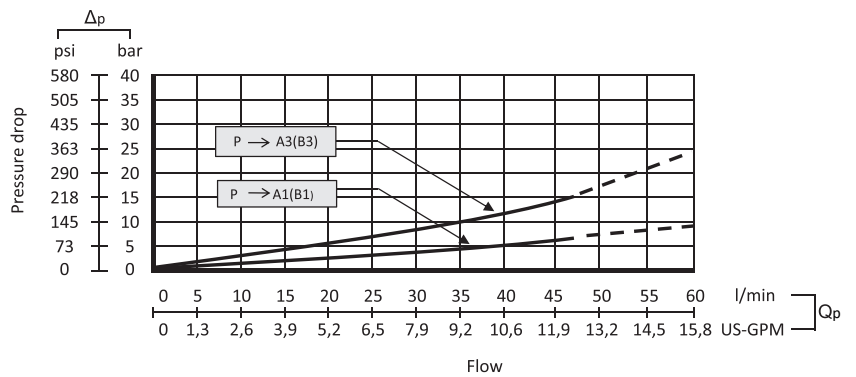
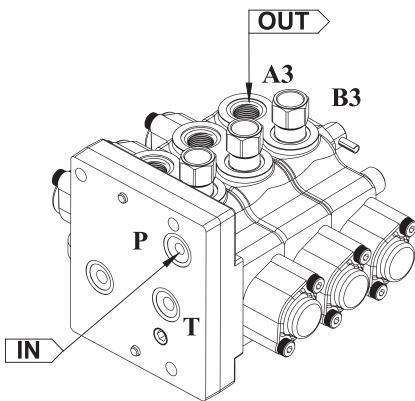
Order Code GMM - STY - 4

PERFORMANCE DATA AND CURVE

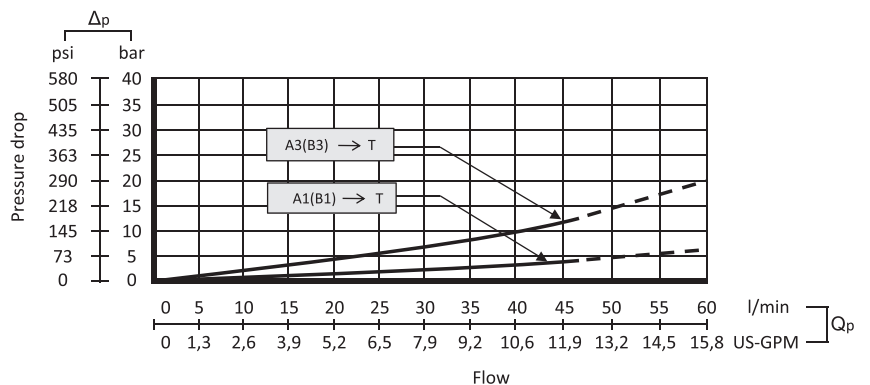
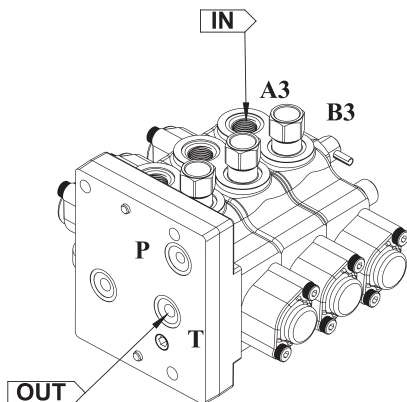
Open Center - Pressure Drop (P-T)



Inlet to Work Port - Pressure Drop (P-A/B)



Work Port to Outlet - Pressure Drop (A/B-T)

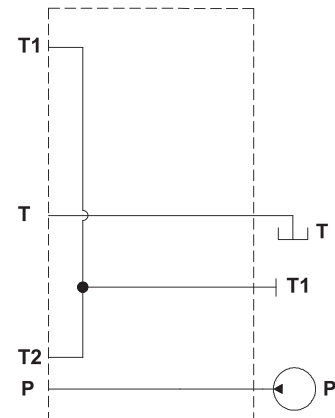
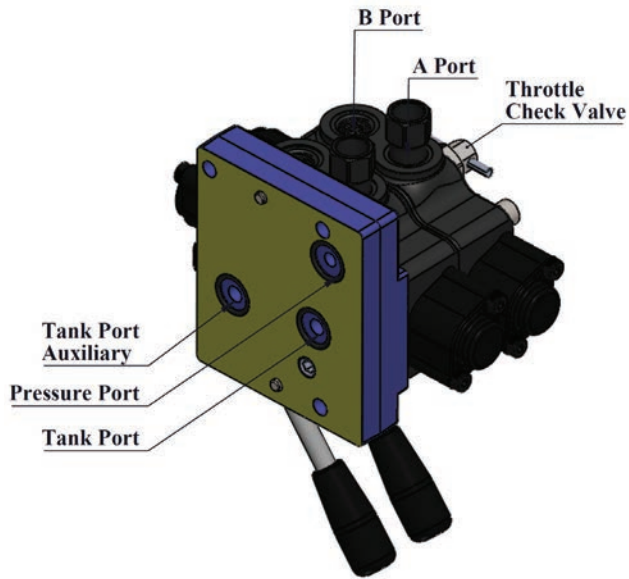


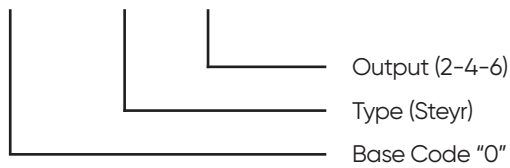
PORTS AND MOUNTING FACE

Port Directional And Type

Port Appearance

Diagram



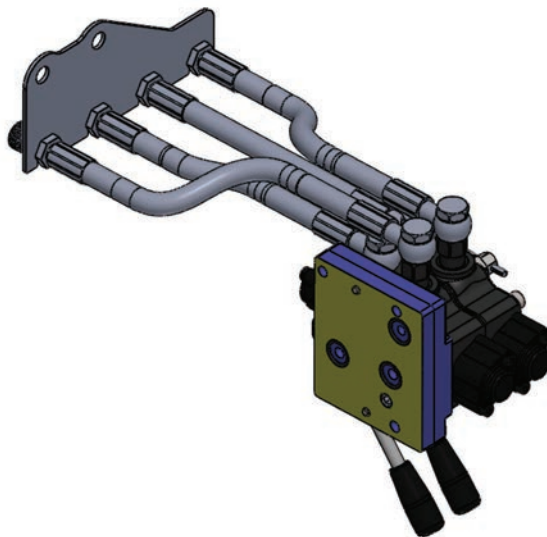
**ORDERING CODES AND INSTALLATION**
**Order Code**
**GMM - STY - 4**


STY-2 (1 section - 2 Output)  
 STY-4 (2 section - 4 Output)  
 STY-6 (3 section - 6 Output)

**Installation**

The GMM STY valve is assembled and tested as per the technical specification of this catalog. Before the final installation on your equipment, follow the below recommendation:

- The valve can be assembled in any position, in order to prevent body deformation and spool sticking mount the product on a flat surface;
- In order to prevent the possibility of water entering the lever box and spool control kit, do not use high pressure wash down directly on the valve;
- Before painting, ensure plastic port plugs are tightly in place.



MODEL	HOSE	COUPLING HOLES 3/8"	COPPER WASHER	SHEET CONNECTION	CONNECTION BOLT	LEVER COUNT
GMM- STY-2	 36 cm - 1 Pcs/ 33 cm - 1 Pcs	 2 Pcs	4 Pcs		DIN 912 M6x20 - 2 Pcs	1 pcs
GMM- STY-4	 36 cm - 2 Pcs/ 33 cm - 2 Pcs	 4 Pcs	8 Pcs		DIN 912 M6x20 - 2 Pcs	2 pcs
GMM- STY-6	 36 cm - 3 Pcs/ 33 cm - 3 Pcs	 6 Pcs	12 Pcs		DIN 912 M6x20 - 2 Pcs	3 pcs