

Features

- Suitable for direct in-line installation,
- Body material steel DIN 1.7225,
- Body surface nickel coated,
- Flued viscosity 10 - 500 mm²/s (10-420 cSt),
- For mineral oil ISO 6743/4,
- Leakage 0 – 0,25 cm³/min

Özellikleri

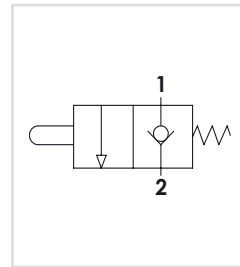
- Direkt hat üzerine montaja uygun,
- Gövde malzemesi çelik DIN 1.7225,
- Gövde yüzeyi nikel kaplama,
- Akışkan viskozitesi 10 - 500 mm²/s (10-420 cSt),
- ISO 6743/4 Mineral yağlar için,
- İç kaçak 0 – 0,25 cm³/min



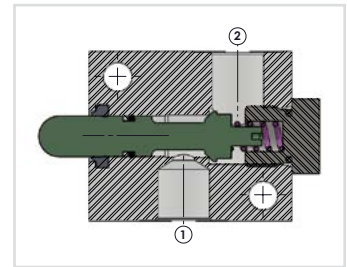
Order Code - Sipariş Kodu

GMV	-	06	-	B
Model - Tip		Size - Ebat		Thread Type Diş Tipi
GMV		06 = 1/4"		B = BSPP
		08 = 3/8"		N = NPT
		10 = 1/2"		U = UNF

Circuit - Şema

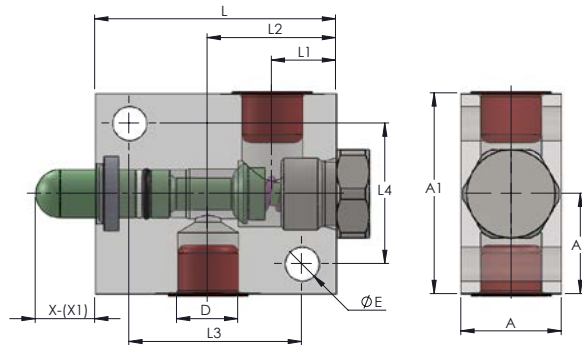


Sectional - Kesit



General Parameters and Dimensions (mm) – Genel parametreler ve ölçüler (mm)

Size - Ölçü	Q max	P max	ØD BSPP	A	A1	A2	X-(X1)	ØE	L	L1	L2	L3	L4	Weight Ağırlık
	l/min	Bar												Kg
GMV-06	40	350	1/4"	25	50	25	14-10	8,5	60	16	32	43	35	0,60
GMV-08	40	350	3/8"	25	50	25	14-10	8,5	60	16	32	43	35	0,53
GMV-10	60	300	1/2"	40	70	35	13-3	8,5	90	30	47,5	60	45	1,83



Pressure Drop – Basınç Kaybı

