

Features

- Suitable for direct in-line installation,
- Body material steel DIN 1.7225,
- Body surface nickel coated,
- Flued viscosity 10 - 500 mm²/s (10-420 cSt),
- For mineral oil ISO 6743/4,
- Leakage 0 – 0,25 cm³/min

Özellikleri

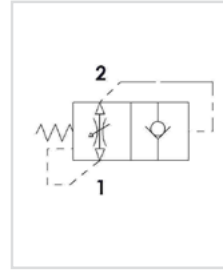
- Direkt hat üzerine montaja uygun,
- Gövde malzemesi çelik DIN 1.7225,
- Gövde yüzeyi nikel kaplama,
- Akışkan viskozitesi 10 - 500 mm²/s (10-420 cSt),
- ISO 6743/4 Mineral yağlar için,
- İç kaçak 0 – 0,25 cm³/min



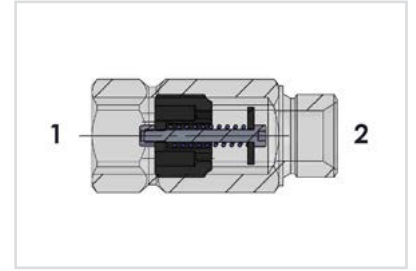
Order Code - Sipariş Kodu

Model - Tip	Size - Ebat	Thread Type Dişi Tipi
GPK - 06 - B		
GP = Catridge	06 = 1/4"	B = BSPP
GP = Catridge	08 = 3/8"	N = NPT
With Body	10 = 1/2"	U = UNF
	15 = 3/4"	

Circuit - Şema

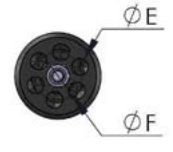
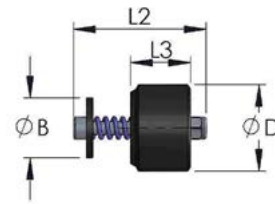
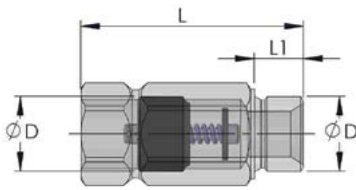


Sectional - Kesit



General Parameters and Dimensions (mm) – Genel parametreler ve ölçüler (mm)

Size - Ölçü	Q max	P max	ØD	AA	B	E	F	L	L1	L2	L3	Weight Ağırlık
	l/min	Bar										BSP
GP-06	25	350	1/4"	19	10.5	2,5	8	50	11	19	8	0,15
GP-08	50	350	3/8"	22	13	3	10	58	12	23	11	0,20
GP-10	80	350	1/2"	27	15	4	11.5	66	14	29	13	0,25
GP-15	150	350	3/4"	32	18	5	14,5	78	16	40	18	0,30



Pressure Drop – Basınç Kaybı

