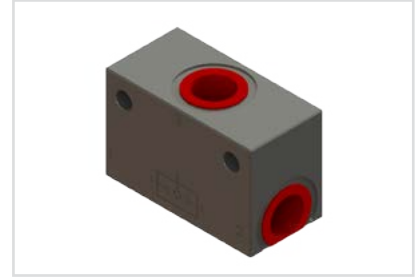


## Features

- Suitable for direct in-line installation,
- Body material steel DIN 1.7225,
- Body surface nickel coated,
- Flued viscosity 10 - 500 mm<sup>2</sup>/s (10-420 cSt),
- For mineral oil ISO 6743/4,
- Leakage 0 – 0,25 cm<sup>3</sup>/min

## Özellikleri

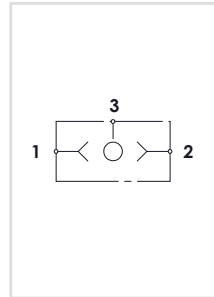
- Direkt hat üzerine montaja uygun,
- Gövde malzemesi çelik DIN 1.7225,
- Gövde yüzeyi nikel kaplama,
- Akışkan viskozitesi 10 - 500 mm<sup>2</sup>/s (10-420 cSt),
- ISO 6743/4 Mineral yağlar için,
- İç kaçak 0 – 0,25 cm<sup>3</sup>/min



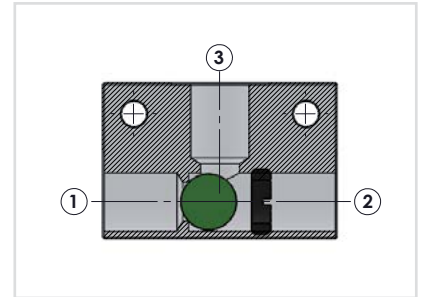
### Order Code - Sipariş Kodu

<b>GVV</b>	-	<b>06</b>	-	<b>B</b>
Model - Tip		Size - Ebat		ThreadType Diş Tipi
GVV		06 = 1/4"		B = BSPP
		08 = 3/8"		N = NPT
		10 = 1/2"		U = UNF

### Circuit - Şema

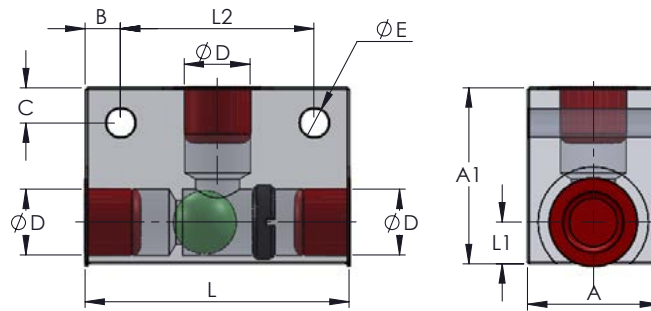


### Sectional - Kesit



### General Parameters and Dimensions (mm) – Genel parametreler ve ölçüler (mm)

Size - Ölçü	Q max	P max	ØD	A	A1	B	C	E	L	L1	L2	Weight Ağırlık
	l/min	Bar	BSPP									Kg
GVV-06	20	350	1/4"	30	35	9	8	6,5	53	9,5	35	0,39
GVV-08	40	350	3/8"	30	40	8	8	6,5	60	9,5	44	0,45
GVV-10	60	350	1/2"	30	50	10	10	8,5	70	15	50	0,60



### Pressure Drop – Basınç Kaybı

