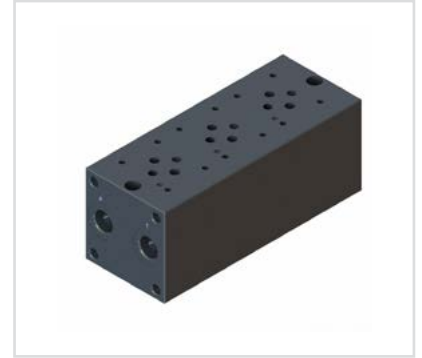


Features

- Body material aluminum 6013 – T4 (210 Bar 3000 PSI)
- Body surface eloxal (Anodic) coated,
- Flued viscosity 10 - 500 mm²/s (10-420 cSt),
- For mineral oil ISO 6743/4

Özellikleri

- Gövde malzemesi alüminyum 6013-T4 (210 Bar 3000 PSI)
- Yüzey eloksal (Anodik) kaplama,
- Akışkan vizkozitesi 10 - 500 mm²/s (10-420 cSt),
- ISO 6743/4 Mineral yağlar için.

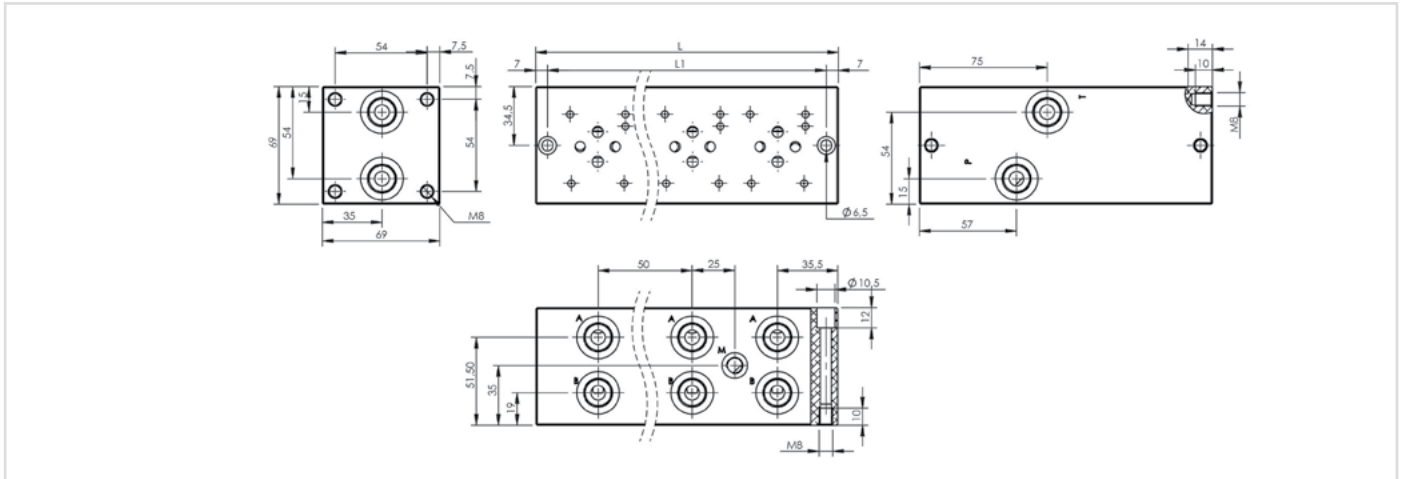


Order Code - Sipariş Kodu

MSD	-	06	-	2	-	A
Model - Tip		Size		No. Of Station Çıkış Sayısı		Material Malzeme
MSD		06 = 1/4"		2-8 Station 2-8 Çıkış		A-Alluminum Alüminyum

General Parameters and Dimensions (mm) – Genel parametreler ve ölçüler (mm)

Size - Ölçü	Q max	P max	ØP-T	ØA-B	ØGA	L mm	L1 mm	Weight Ağırlık
	l/min	Bar	BSPB	BSPB	BSPB			Kg
MSD-06-2A	40	210	1/2"	3/8"	1/8"	122	108	1,35
MSD-06-3A	40	210	1/2"	3/8"	1/8"	172	158	1,95
MSD-06-4A	40	210	1/2"	3/8"	1/8"	222	208	2,55
MSD-06-5A	40	210	1/2"	3/8"	1/8"	272	258	3,15
MSD-06-6A	40	210	1/2"	3/8"	1/8"	322	308	3,75
MSD-06-7A	40	210	1/2"	3/8"	1/8"	372	358	4,35
MSD-06-8A	40	210	1/2"	3/8"	1/8"	422	408	4,95



Pressure Drop And Hydraulic Circuit - Basınç Kaybı ve Hidrolik Şema

